



Greater St. Louis Area Council

Scouts BSA Program Guide

2023-2024

A comprehensive program guide for Troops
from September 2023 through August 2024



SCOUT

What You'll Learn

Get firsthand information on:

Membership

Programs and Events for 2023-2024

Trainings

Unit Planning and Budget Resources

Summer Camps

Weekend Camping

GSLAC Properties

Religious Awards

Product Sales

and MORE!

All specifically for SCOUTS BSA!

STLBSA.ORG



TABLE OF CONTENTS

UNIT RESOURCES

CONTACT US AND COUNCIL MAP	P:4
COUNCIL SERVICE CENTERS & STORES	P:5
PLANNING AND BUDGET	P:6
TROOP CALENDAR PLANNING	P:7
TROOP BUDGET PLANNING	P:8
MEMBERSHIP & RECRUITMENT	P:14
SCOUTBOOK RESOURCES	P:15
YOUTH PROTECTION TRAINING	P:16

FUNDRAISING RESOURCES

POPCORN SALES	P:9
CAMP CARD SALES	P:9
COFFEE SALES	P:9
UNIT MONEY-EARNING APPLICATION	P:10
OUTREACH ASSISTANCE	P:12
FRIENDS OF SCOUTING	P:13

EVENTS AND PROGRAMS

NATIONAL JAMBOREE	P:16
TRAINING	P:17
ADDITIONAL PROGRAMS	P:19
COMMUNITY SERVICE	P:20
STEM	P:21
RELIGIOUS AWARDS	P:23
ADDITIONAL RESOURCES	P:23

CAMPS

PROPERTIES	P:24
CHALLENGE COURSES / CLIMBING	P:27
HORSE PROGRAMS	P:28
SUMMER CAMPS	P:29
SPECIALTY CAMPS / DISCOUNTS	P:30

CALENDAR

CALENDAR 2023-2024	P:31
PATH TO SUCCESS	P:44

Scouts BSA

Scouting is the ultimate form of learning by doing. Youth lead their own activities and participate in service, outdoor adventures, and leadership development programs. Scouts are introduced to countless hobbies, interests, sciences, and even future career choices.

Youth can be Scouts if they are at least 10 years old, currently in the fifth grade and register on or after March 1st; or have earned the Arrow of Light Award and are at least 10 years old, or are age 11 but have not reached age 18.



CONTACT US

Stay up to date on all of the Greater St. Louis Area Council's information and events by following us on social media and checking our website often!



facebook.com/stlbsa



@stlbsa

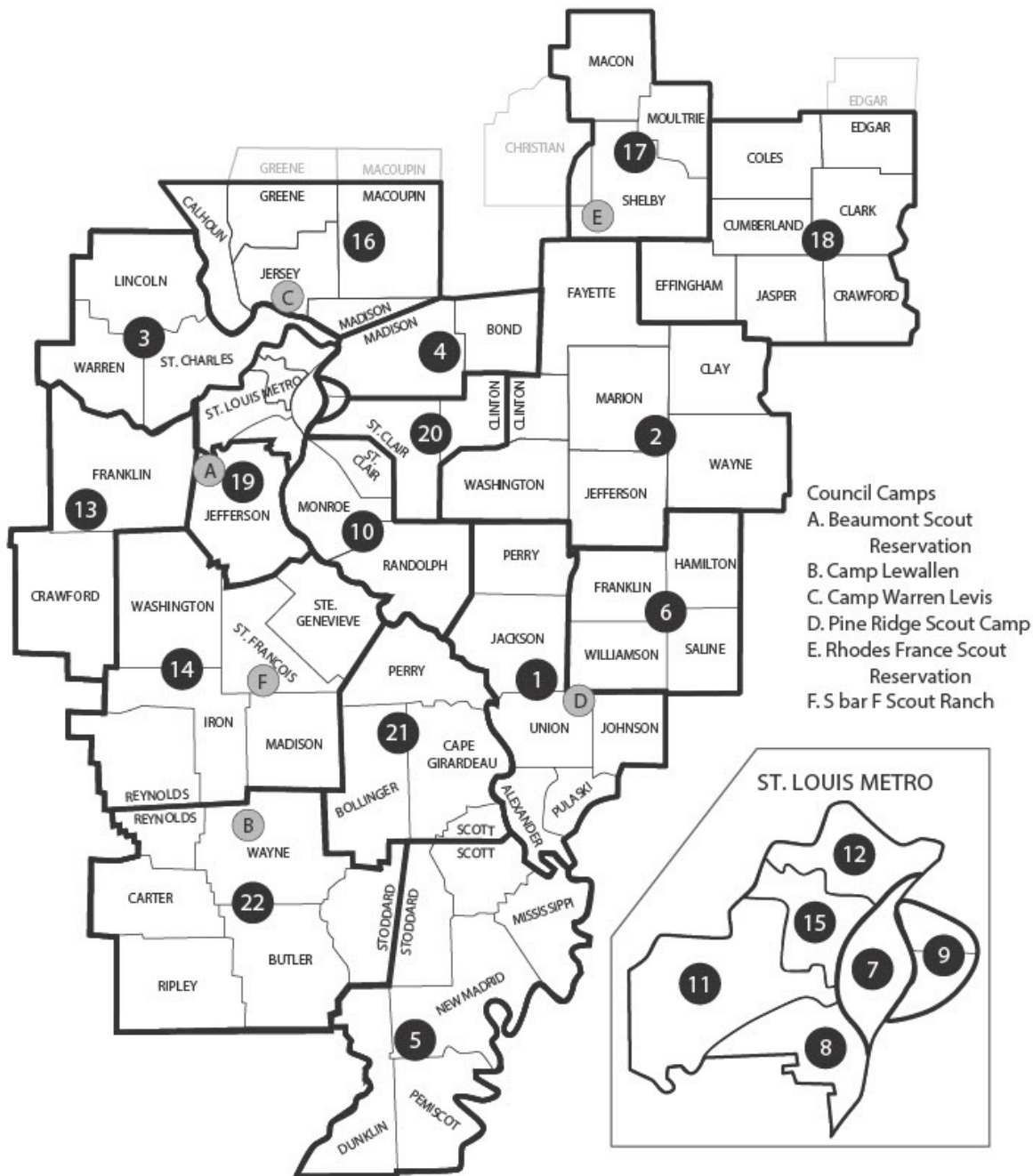


@stlbsa

website: stlbsa.org

phone: 314-361-0600

email: help@stlbsa.org



- 1. Big Muddy District
- 2. Black Gold District
- 3. Boone Trails District
- 4. Cahokia Mounds District
- 5. Cherokee District
- 6. Egyptian District

- 7. Keystone District
- 8. Gravois Trail District
- 9. Illini District
- 10. Kaskaskia District
- 11. New Horizons District
- 12. North Star District
- 13. Osage District
- 14. Ozark Trailblazers District
- 15. Pathfinder District
- 16. Piasa Bird District
- 17. Arrowhead District
- 18. Redhawk District

- 19. River Trails District
- 20. Soaring Eagle District
- 21. Shawnee District
- 22. Sioux District



COUNCIL SERVICE CENTERS

We are here for you.

All service centers are open Monday- Friday. A Scout Shop is also available at each location. The BSA Outfitters locations are open on Saturday.
stlbsa.org/shop

MacArthur Service Center

4568 West Pine Blvd., St. Louis, MO 63108
314-361-0600 or 800-392-0895
9 a.m. to 5 p.m.
Scout Shop: M-F, 9 a.m.-5

Central Illinois Service Center

and Scout Shop
262 W. Prairie Ave., Decatur, IL 62523
217-429-2326
8:30 a.m. to 5 p.m.

Ritter Service Center

and Scout Shop
3000 Gordonville Rd., Cape Girardeau, MO 63703
573-335-3346 or 800-335-3346
8:30 a.m. to 5:00 p.m.

Southern Illinois Service Center

and Scout Shop
803 East Herrin St., Herrin, IL 62948
618-942-4863 or 888-942-4863
9:30 a.m. to 4:30 p.m. (Closed for lunch: 12:30-1 p.m.)

BSA Outfitters - 2 locations

13347 Manchester Rd. Des Peres, MO 63131 314 -984-0014 M-Th, 9 a.m.-7 p.m. F, 9 a.m.-6 p.m. Sa, 9 a.m.-4 p.m.	5205 N. Illinois St. Fairview Height, IL 62208 618-222-1574 M-F 10a-6p, Sa 10a-3p
---	--

PLANNING AND BUDGET

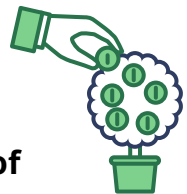
PROGRAM DEVELOPMENT

Every Scout deserves a fun, robust, educational and exciting program! Creating a plan at the beginning of the year will help ensure that for your Scouts.

- **First, brainstorm about fun activities, adventures, and experiences your troop could have this year. Include all the Scouts and parents, if you can, to get the most and best ideas:**
 - **What council and district level activities will you include, like summer camps, fall events, trainings, etc.?**
 - **What traditional troop activities will you include?**
 - **What resources do you have in your troop? Are there parents who work at locations where you could do activities?**
 - **What are some fun activities you may want to include, however big or small, like picnics, a trip to Six Flags, weekend campouts, etc.?**
- **Next, your Troop committee can review all the suggestions and narrow down to the activities that make sense for your unit and plan on when they make the most sense to do.**
- **Lastly, communicate it to your families the plan. You can do a simple list with dates shared via email and at the Troop meetings, or you can get creative and produce and share Facebook events, a google calendar, or use some other medium.**

BUDGET AND FUNDING

Program planning needs to also include a funding plan. Use the budget planning tool on the next page to see how much your year of scouting will cost, and what your individual Scout and/or Troop fundraising goals should be.



See a sample budget worksheet on page 8:



Troop Calendar Planning

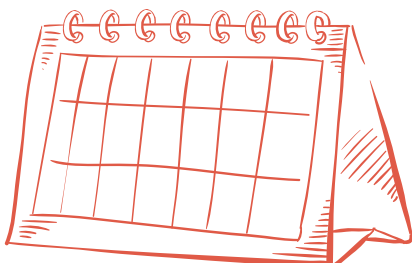
The yearly calendar planning process is important for each troop.

One of the key elements of all successful units is the Annual Program Plan and Planning Conference. Research has shown that a common element of a strong unit is a good annual program planned a year in advance that is then shared with all families in the form of a calendar. The important result of a shared annual program calendar is that a unit will attract more families and Scouts will stay involved longer.

SAMPLE CALENDAR PLANNING CHART

Month	Meeting Plan						Special Events/ Holidays	Local/ Chartered Organization Calendars	Council/ District	PLC/VOA	Unit Committee Meeting	Roundtable
	Program Feature/ Topic	Meeting 1	Meeting 2	Meeting 3	Meeting 4	Main Event						
September												
October												
November												
December												
January												
February												
March												
April												
May												
June												
July												
August												

Check out the Troop Annual Program Planning Conference Guide at
<https://www.scouting.org/programs/scouts-bsa/program-planning-tools/>



<https://stlbsa.org/resources/helpful-forms-and-links/>

* Many units include all or a portion of the resident camp fee in the annual budget. This helps ensure that all Scouts have the opportunity to attend.



SCOUT 8
STLBSA.ORG

FUNDING YOUR PROGRAM

Popcorn Sales benefit your troop and help fund the council camp scholarships, Scouting for Food, and much more!

- There is no up-front cost to your unit.
- Units pay for only the product they sell.
- Sales support local Scouting.
- A built-in prize program encourages Scouts to sell.
- Popcorn sales teach Scouts the responsibility and value of earning their way.
- Popcorn is easy to sell.
- Scouts can earn free camping at a Greater St Louis Area Council camp of their choice!
- Sign up at <http://stlbsa.org/popcorn-fundraiser>
- Sale begins in August and runs through December.

Sell through

1. *Show & Sell (sell in person at a display table or booth),*
2. *Take Order (ask neighbors and friends to place an order),*
3. *Online Sales (create your own online store through our vendor)*



Camp Cards are an easy sale that helps Scouts earn funds for camps and activities!

- No upfront costs
- Earn 50% profit on every card sold
- Cards are different by region, supporting local businesses
- Visit <http://stlbsa.org/camp-cards> to learn more



Coffee Sales benefit your troop and Scouts earn money for camp while also helping fund the council camp scholarships, camp improvements, and much more!

- There is no up-front cost to your unit.
- Units pay for only the product they sell.
- Sales support local Scouting.
- A built-in prize program encourages Scouts to sell.
- Coffee sales teach Scouts the responsibility and value of earning their way.
- Coffee is easy to sell.
- Sign up at <http://stlbsa.org/coffee-fundraiser>.



Beyond the Council supported fundraisers on the previous page, submit this application to the local service center for all other troop fundraisers.

BOY SCOUTS OF AMERICA

DATE _____

Received in council service center _____
(Date)

UNIT MONEY-EARNING APPLICATION

Applications are not required for council-coordinated money-earning projects such as popcorn sales or Scout show ticket sales.

Please submit this application to your council service center at least two weeks in advance of the proposed date of your money-earning project. Read the 10 guides on the other side of this form. They will help you in answering the questions below.

☐ Pack

☐ Troop

No. _____ Chartered Organization _____

☐ Team

☐ Crew

Community _____ District _____

Submits the following plans for its money-earning project and requests permission to carry them out.

What is your unit's money-earning plan? _____

About how much does your unit expect to earn from this project? _____ How will this money be used? _____

Does your chartered organization give full approval for this plan? _____

What are the proposed dates? _____

Are tickets or a product to be sold? Please specify. _____

Will your members be in uniform while carrying out this project? (See items 3-6 on other side.) _____

Have you checked with neighboring units to avoid any overlapping of territory while working? _____

Is your product or service in direct conflict with that offered by local merchants? _____

Are any contracts to be signed? _____ If so, by whom? _____

Give details. _____

Is your unit on the budget plan? _____ How much are the dues? _____

How much does your unit have in its treasury? _____

Signed _____ Signed _____

(Chartered Organization Representative)

(Unit Leader)

Signed _____

(Chairman, Unit Committee)

(Address of Chairman)

FOR USE OF DISTRICT OR COUNCIL FINANCE COMMITTEE: Telephone _____

Approved by _____ Date _____

Approved subject to the following conditions _____

GUIDES TO UNIT MONEY-EARNING PROJECTS

A unit's money-earning methods should reflect Scouting's basic values. Whenever your unit is planning a money-earning project, this checklist can serve as your guide. If your answer is "Yes" to all the questions that follow, it is likely the project conforms to Scouting's standards and will be approved.

1. Do you really need a fund-raising project?

There should be a real need for raising money based on your unit's program. Units should not engage in money-earning projects merely because someone has offered an attractive plan. Remember that individual youth members are expected to earn their own way. The need should be beyond normal budget items covered by dues.

2. If any contracts are to be signed, will they be signed by an individual, without reference to the Boy Scouts of America and without binding the local council, the Boy Scouts of America, or the chartered organization?

Before any person in your unit signs a contract, he must make sure the venture is legitimate and worthy. If a contract is signed, he is personally responsible. He may not sign on behalf of the local council or the Boy Scouts of America, nor may he bind the chartered organization without its written authorization. If you are not sure, check with your district executive for help.

3. Will your fund-raiser prevent promoters from trading on the name and goodwill of the Boy Scouts of America?

Because of Scouting's good reputation, customers rarely question the quality or price of a product. The nationwide network of Scouting units must not become a beehive of commercial interest.

4. Will the fund-raising activity uphold the good name of the BSA? Does it avoid games of chance, gambling, etc.?

Selling raffle tickets or other games of chance is a direct violation of the BSA Rules and Regulations, which forbid gambling. The product must not detract from the ideals and principles of the BSA.

5. If a commercial product is to be sold, will it be sold on its own merits and without reference to the needs of Scouting?

All commercial products must sell on their own merits, not the benefit received by the Boy Scouts. The principle of value received is critical in choosing what to sell.

6. If a commercial product is to be sold, will the fund-raising activity comply with BSA policy on wearing the uniform?

The official uniform is intended to be worn primarily for use in connection with Scouting activities. However, council executive boards may approve use of the uniform for any fund-raising activity. Typically, council popcorn sales or Scout show ticket sales are approved uniform fund-raisers.

7. Will the fund-raising project avoid soliciting money or gifts?

The BSA Rules and Regulations state, "Youth members shall not be permitted to serve as solicitors of money for their chartered organizations, for the local council, or in support of other organizations. Adult and youth members shall not be permitted to serve as solicitors of money in support of personal or unit participation in local, national, or international events."

For example: Boy Scouts/Cub Scouts and leaders should not identify themselves as Boy Scouts/Cub Scouts or as a troop/pack participate in The Salvation Army's Christmas Bell Ringing program. This would be raising money for another organization. At no time are units permitted to solicit contributions for unit programs.

8. Does the fund-raising activity avoid competition with other units, your chartered organization, your local council, and the United Way?

Check with your chartered organization representative and your district executive to make certain that your chartered organization and the council agree on the dates and type of fund-raiser.

The local council is responsible for upholding the Charter and By-laws and the Rules and Regulations of the BSA. To ensure compliance, all unit fund-raisers MUST OBTAIN WRITTEN APPROVAL from the local council NO LESS THAN 14 DAYS before the fund-raising activity.

#34427



<https://stlbsa.org/resources/helpful-forms-and-links>

Scoutreach Assistance Request Form

Greater St. Louis Area Council

Scoutreach is assistance that is offered for those desiring Scouting but due to financial hardship are unable to cover the full cost of membership in the Boy Scouts of America.

Name of Scout seeking Assistance: _____

Unit type and number of individual seeking assistance: Pack _____

Does the Scout seeking assistance have any siblings registered in the BSA?

No ☐ Yes ☐ (If yes, how many registered: _____)

Does the Scout seeking assistance have a parent or guardian registered in the BSA?

No ☐ Yes ☐ (If yes, how many parents / guardians (____))

Does the Scout's unit participate in the Family Friends of Scouting campaign?

Yes ☐ No ☐

Does the Scout's unit participate in Product Sales (popcorn) campaign?

Yes ☐ No ☐

For the individual to receive assistance through Scoutreach there must be an important and urgent need for assistance. We ask that families pay some amount for the registration in which they can afford and then to ask for the difference that is needed to complete the amount needed for registration.

Amount family of individual can pay: \$_____ Amount of Assistance Requested: \$_____

For assistance to be granted the BSA asks that the parent or guardian of the individual needing assistance please give a brief statement (2 to 3 sentences) stating the need for assistance and the reason it is needed. For assistance with this statement please talk with the Scouting Unit Leader for more information. **Please write reason below:**

Upon completion of this form, please sign and obtain signature of unit leader. Then submit with your Application

Signature of Parent / Guardian asking for Assistance

Signature of Unit Leader

<https://stlbsa.org/resources/helpful-forms-and-links>



DID YOU KNOW THAT Home State Health Insurance CAN COVER THE COST OF REGISTRATION FOR SCOUTING

No youth will be denied a Scouting experience due to financial hardship.
For youth only, sorry but this is not able to be used for adult membership.

For more information on how to join, call Missouri Care USA Health Insurance at 1-855-694-4663

Monday - Friday 8:00 AM to 5:00 PM.

Please ask for Member Services and they will be able to help you get the form needed.

They'll provide you with a Club Voucher. Once you get your voucher in the mail,
you can use it at one of our listed clubs. Missouri Care USA Health Insurance
will pay for your membership.

Application at <https://stlbsa.org/resources/helpful-forms-and-links>

Friends of Scouting (FOS) is the annual giving campaign of the Greater St. Louis Area Council. The FOS campaign provides nearly 20% of the council budget every year. That means that a significant portion of the council budget comes from the generosity of Scouting families, alumni and community supporters. Without this funding, our council could not supply the resources necessary to provide a quality, adventure-filled Scouting program.

Each FOS contribution to the council provides tremendous assistance for:

- insurance for leaders and participants
- improving camp properties for your Scouts and future Scouts
- financial assistance for families in need
- volunteer training and support
- growing the Scouting program

We need your help! A volunteer would like to attend your unit's meeting to share more information about Friends of Scouting and give families an opportunity to donate. As you are planning your calendar, make sure you schedule 5-10 minutes for a FOS volunteer to talk at your Spring Court of Honor. We would also like 5 minutes at a meeting 1-2 months BEFOREHAND to introduce the campaign and share your unit's unique donation website.

RECRUITING

We believe that Scouting is the best leadership and character development program for youth and strive to ensure that every child in every community has the opportunity to join. As a leader in your Troop, you can ensure the other families in your community receive that invitation, while also ensuring that your unit grows and continues to thrive and provide life changing program for kids.



Fall Recruitment Campaign

Most families join Scouting in the late summer, as the school year is starting, so your recruiting efforts will be most impactful at this time and should be well planned by your Troop committee.

Specific fall recruitment training will be conducted over the summer, but the best practices always include:

- Having a table at the back to school fairs
- Planning and promoting a joining night a few weeks after school starts
- Inviting families to join through flyers, school talks and personal social media posts
- Following-up with families who missed the joining night with a second chance joining opportunity about one month later

For resources and ideas to help with recruiting, visit:
<https://stlbsa.org/recruitment>



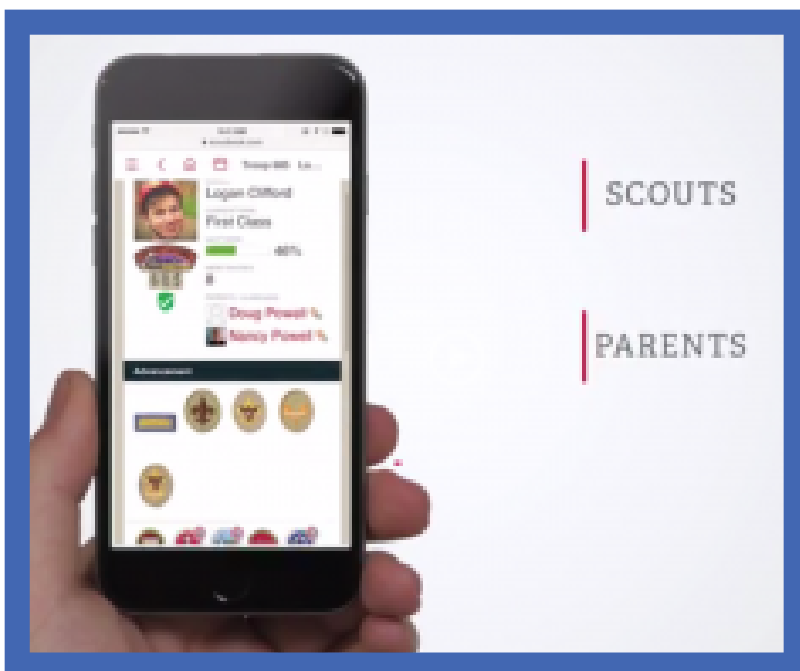
SCOUTBOOK



Scoutbook is your online resource to assist you with managing your unit. Included in this free application are calendars, tracking and reporting awards, and tools for communication with parents.

From the first knot tied to final hours of service performed, the Scouting experience is a journey like none other. And Scoutbook is your go-to tool to ensure not a moment is missed – tracking advancement, milestone achievements and all the fun along the way.

SCOUTBOOK IS FREE FOR EVERYONE REGISTERED IN SCOUTING. MAKE THE MOST OF THIS RESOURCE TO HAVE THE *BEST SCOUTING YEAR* FOR YOUR SCOUT AND FAMILY!



Youth Protection Training.



PROTECTING OUR YOUTH CAN ONLY BE ACHIEVED BY EVERYONE COMMITTING TO THAT PROTECTION.

The BSA places the highest importance on providing a secure environment for all Scouts. Youth Protection Training is required for all BSA -registered volunteers- regardless of position- and must be completed every two years. However, you do not have to be registered member of the BSA to take the training. Every parent involved in Scouting is encourage to complete the course which is available 24/7 at my.scouting.org

- No new leader can be registered without first completing the training.
- No unit may re-charter without all leaders current on their Youth Protection Training.
- **Adult Registration Requirement to Take Effect September 1, 2023.** Two registered adult leaders at least 21 years of age are required at all Scouting activities, including all meetings. There must be a registered female adult leader at least 21 years of age in every unit serving females.

Learn more at: scouting.org/youthprotection

2023 National Jamboree



Face the Challenge! The 2023 National Jamboree will be here soon! Scouting's flagship event is one-of-a-kind. Join 30,000 Scouts, leaders, and staff at the Summit Bechtel Reserve in West Virginia to experience everything from one of the longest zip lines in North America, a world-class skate park, all-terrain vehicles, treetop canopy tours, rock climbing, patch trading, stadium shows, and much more! Held every four years, the Jamboree is an amazing opportunity for everyone to experience the best of Scouting, all in one place. Get a visitor pass @ <https://jamboree.scouting.org/visitors/>



SCOUTS BSA LEADER TRAININGS

Get trained and put on the best program ever.

A trained leader is knowledgeable and more confident in their role being performed.

Trained leaders

- impact the quality of programs
- leader tenure
- youth tenure
- safety
- and whole lot more!

In short, a trained leader is better prepared to make Scouting program all it can be!

In addition to the training listed in this section, your district will host **leader position-specific training**. Training specific to your role in the pack! View your district calendar to find dates of trainings.



E-LEARNING AT MY.Scouting.org

Visit my.scouting.org and follow the instruction to sign in and create an account to access dozens of supplemental training courses designed to provide orientation beyond the basic training offered in leader-specific training.

UNIVERSITY OF SCOUTING

NOVEMBER 4, 2023

Webster University in Webster Groves, MO

University of Scouting is a multi day event offering the widest variety of training opportunities in all program areas. This training event is for all registered leaders, covering a plethora of topics, from shooting sports to basic leader training.

BACK COUNTRY LEADERSHIP SKILLS TRAINING

This course is designed for the adult Scouter and experienced youth Scouts who understand the role High Adventure plays in keeping older youth involved in Scouting. This course will give you the skills and confidence to realize your vision of High Adventure in your troop or crew. If you are a first-time Philmont Crew Advisor, this training will jump-start your ability to prepare your crew for a peak Philmont trek. Your Council High Adventure Training Team will help you deliver the promise of Adventure to your Scouts and Venturers. September 16-17, 2023 & April 6-7, 2024. Visit <https://stlbsa.org/training/> for more information.

WOOD BADGE

2023 FALL COURSE: SEPTEMBER 29-OCTOBER 1 & OCTOBER 14-15, PINE RIDGE

2024 SPRING COURSE: MAY 17-19 & JUNE 1-2, BEAUMONT SCOUT RESERVATION

Advance adult leader training designed to enhance leadership skills and develop more effective leaders. The Wood Badge program gives participants a greater understanding of Scouting aims and methods.

SPECIAL NEEDS AWARENESS TRAINING

HELD ON DATES IN THE FALL AND SPRING AT VARIOUS LOCATIONS AROUND THE COUNCIL. GET INFORMATION AT THIS LINK [STLBSA.ORG/SPECIAL-NEEDS-SCOUTS](https://stlbsa.org/special-needs-scouts)

For all ages. There will be activities for Cub Scouts and Disabilities Awareness Merit Badge for Scouts BSA. Attend this training with professionals in the field of Special Needs and Education for the opportunity to learn how to provide the best services for every Scout.

SCOUTS BSA YOUTH TRAININGS

Get trained this year!

Scouts BSA aims to teach our future leaders. Start with these trainings and encourage all youth to attend!



National Youth Leadership Training

NYLT is advance training for youth leaders in Scouts BSA troops and Venturing Crews. Through this week long outdoor training conducted during summer camp, male and females Scouts grow and improve their leadership skills while following the guidelines of the Scout Oath and Law.

NYLT offers a land-base and water-based course. The water based course , called Pack and Paddle is conducted in the S bar F Scout Ranch back country and on Nims Lake. In additional to their leadership skills, participants also practice low-impact camping, hiking, canoeing, and learn the proper use of compass for navigation.

2023 Summer Offerings:

Three weeks at S-F - June 11-17, June 18-24, or July 9-15

July 23-29 at Camp Warren Levis

Weekend course: August 18-20 & August 25-27, Beaumont

2024 Summer Offerings:

Three weeks at S-F - June 9-15, June 16-22, or July 7-13

July 21-27 at Camp Warren Levis

Weekend course: August 9-11 & August 16-18, Beaumont



Den Chief Training

A Den Chief is a member of Scout BSA troop who assists a Cub Scout leader at den and pack meetings and other Scouting events. Den Chief training is for

Scouts who desire a leadership role and are interested in working with younger Scouts.

Check out our council website for training dates coming in Fall 2023 and virtual in Spring 2024!

Shooting Sports Adult Training

The Greater St. Louis Area Council holds a variety of training courses to certify adults to conduct shooting sport programs for district and unit events. This includes training for Range Safety Officer (RSO), Basic Instructor (BIT), NRA Instructor for rifle, shotgun, and pistol, and Chief Range Safety Officer. Learn more and register @ <https://stlbsa.org/training/shooting-sports/>.

ADDITIONAL PROGRAMS & TRAININGS

Map & Compass

Training

Map & Compass training is for leaders 18 years and older. This training prepares leaders to take their troops through the map and compass program at Beaumont Scout Reservation. The program is a progressive learning experience incorporating games, fun, map reading and compass skills. The day will culminate by using the skills on an orienteering course. The course will be held October 14, 2023 and February 24, 2024. Register @ <https://stlbsa.org/training/map-compass/>.

Distinguished Conservation Award

The National Council and the GSLAC Conservation Committee have been working hard to bring awareness to Scouts and Scouters about opportunities that exist to become better stewards of natural resources on Council properties, as well as public lands and community preserves. Part of that effort is the revamped Distinguished Conservation Service Award. This award is very similar to the Eagle project process but varies in that it targets conservation issues which can be on a BSA property and you complete two projects versus one. More information can be found at <https://www.scouting.org/outdoor-programs/conservation-and-environment/> and training is available on my.scouting.com. If you need assistance or are looking to see how you can help, please contact the Council Conservation Chair Chad Deschane at GSLACCONS@gmail.com.



Wilderness First Aid Training

GSLAC's Wilderness First Aid 16-hour course is consistent with guidelines established for and by the Boy Scouts of America. This course is designed to meet the needs of those who go into areas beyond the reach of urban EMS. It is required for those units going to BSA National High Adventure Bases (Philmont, Sea Base, Northern Tier) and is recommended for back country camping, hiking, canoeing, or other high adventure activities. Learn more and register @ <https://stlbsa.org/training/first-aid/>.



COMMUNITY SERVICE

DO A GOOD TURN FOR THE COMMUNITY.

A service project is a community service opportunity that puts Scout spirit into action. Projects can take many forms such as a community cleanup, repairing a place of worship, improving a wildlife habitat, or organizing a recycling effort.

Be sure to report all service hours. We want to keep track of all the good Scouting does for the community, and it is a key measurement goal in the Journey to Excellence program.

To easily log your unit's service hours, visit the Scoutbook app and load into Internet Advancement.



SCOUTING FOR FOOD

NOVEMBER 11, 2023 | BAG DISTRIBUTION DAY
NOVEMBER 18, 2023 | BAG COLLECTION DAY

[SFF.STLBSA.ORG](https://sff.stlbsa.org)

Scouting for Food is the council's annual service project and the largest one-day food drive in the Boy Scouts of America.

The campaign is launched on "Bag Distribution Day" when Scouts distribute more than 1 million plastic bags to residences. The Scouts return to neighborhoods the following week on "Bag Collection Day," to retrieve the bags filled with donated non-perishable food.

Each year, Scouting for Food collects about 2 million items of food— enough to provide more than 1.5 million meals for those in need.

MEMORIAL DAY GOOD TURN

MAY 28, 2023 & MAY 26, 2024

**Jefferson Barracks National Cemetery and
Good Turn for Jewish War Veterans (St. Louis)**
<https://stlbsa.org/calendar/>



For more than six decades, Scouts have been decorating graves with an American flag to honor veterans for Memorial Day.

At Jefferson Barracks National Cemetery, the tradition, entering its 73rd year, is one of the longest running Memorial Day events within the Boy Scouts of America. This Good Turn begins with a solemn procession into the cemetery and short 30-minute ceremony honoring deceased military personnel. Following the ceremony, Scouts and Venturers place an American flag at more than 150,000 graves throughout the cemetery.

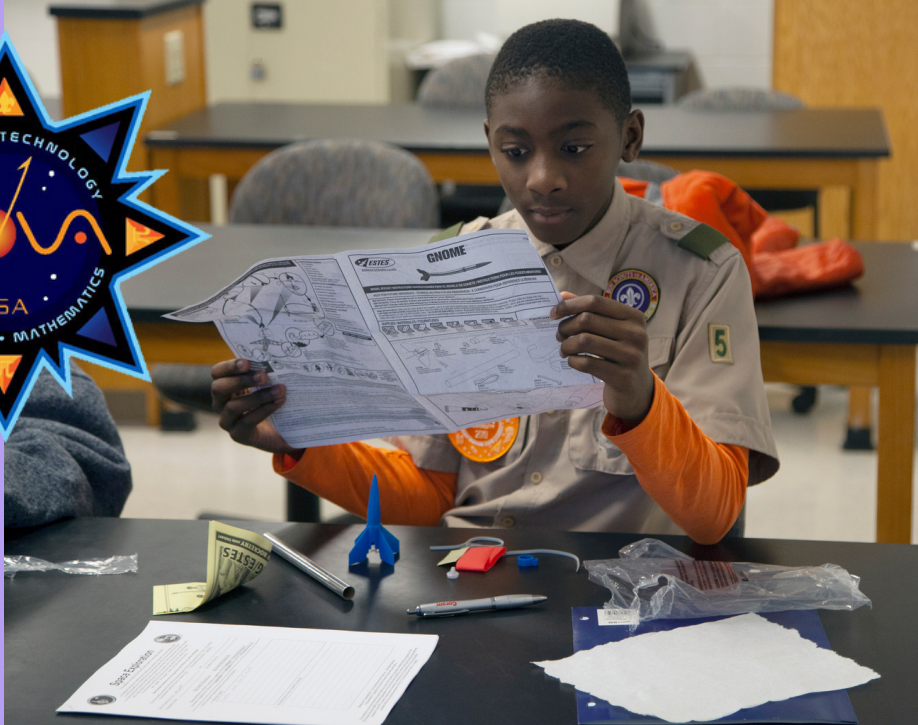
Members of all religions and ages are also invited to help place over 8,000 flags on the graves of our war veterans at eight local Jewish cemeteries in the St. Louis area. The event is sponsored by the Jewish War Veterans and the Jewish Committee on Scouting. Youth perform a brief ceremony at each grave site for a meaningful experience.

Scouts of all ages and from all districts are invited to participate in both Good Turn events.

STEM EVENTS

Science, Technology, Engineering, and Math

Must attend events and activities



STEM U

DEC 9 - UNIVERSITY OF MISSOURI ST. LOUIS

JAN 6 - SOUTHEAST MISSOURI STATE UNIVERSITY

JAN 27 - SOUTHERN ILLINOIS UNIVERSITY - EDWARDSVILLE

FEB 24 - SOUTHERN ILLINOIS UNIVERSITY - CARBONDALE

MAR 16 - LAKE LAND COLLEGE - MATTOON

One of our most popular events, STEM University is a day-long event for Cub Scouts and Scouts BSA focused on earning STEM-based advancements and NOVA awards. Scouts get to visit a college campus, work with STEM experts, and participate in fun, hands-on educational activities.

SCOUTS BSA NOVA DAY & BADGE WORKSHOPS

Various dates and locations

Scouts BSA can explore the cool environment of our host sponsors and at other locations when announced throughout the year. Learn from the expert instructors and earn a STEM NOVA Award. Workshop activities have included using drones, earning corresponding Merit Badges, talks with real scientists, and planetarium shows.

<https://stlbsa.org/stem/upcoming-stem-events/>



STEM EVENTS

STEM ON CAMPUS

JUN 4-7, '23 / JUN 2-5, '24 | Southeast Missouri State University
JUN 4-7, '23 / JUN 2-5, '24 | Eastern Illinois University
JUN 7-10, '23 / JUN 5-8, '24 | University of Missouri-St. Louis

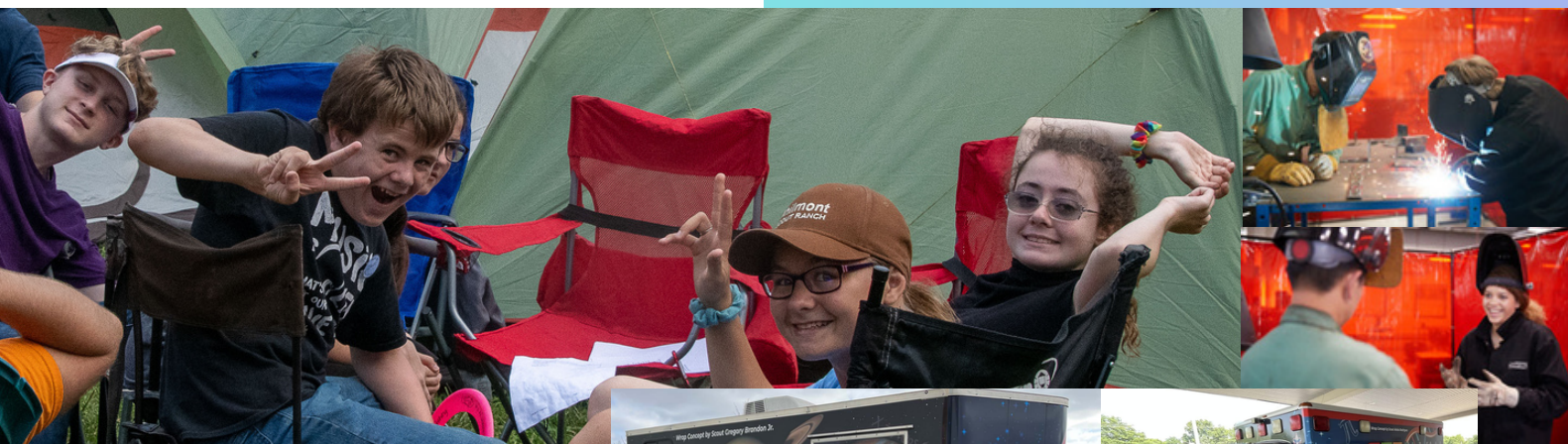
STEM on CAMPus events are unique "camp" experiences where Scouts get a taste for college life! Camp in the dorms, eat in the dining halls, and earn up to 6 Novas or Merit Badges per camp with STEM experts! Also check out the cool campus amenities like the Rec Centers and ropes courses.



SCOUTS BSA STEM CAMP

JUL 16-22, '23 / JUL 14-20, '24 | Camp May - Beaumont

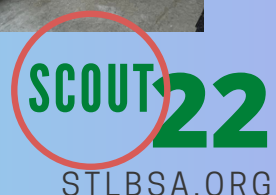
STEM Week is an extraordinary experience for Scouts BSA full of many STEM-based merit badges and activities. Scouts will attend one merit badge (nearly 40 to choose from!) or one NOVA class each day. Afternoons and evenings will include other fun STEM programs and exhibits to experience.



<https://stlbsa.org/stem>



Reserve the STEM LAB or STEM VAN
for your next Troop meeting!



DUTY TO GOD

Religious Emblems Programs

A Scout is reverent. They are reverent toward God. They are faithful in their religious duties and respects the convictions of others in matters of custom and religion.

To encourage members to grow stronger in their faith, religious groups have developed the religious emblems programs. The various religious groups administer the programs. Check with your local council service center or contact the religious organization directly to obtain the curriculum booklets.

<https://www.scouting.org/awards/religious-awards>

<https://stlbsa.org/advancement-awards/religious-emblems-program/>



ADDITIONAL RESOURCES

- Greater St Louis Area Council, BSA: stlbsa.org
 - <https://stlbsa.org/resources/helpful-forms-and-links/>
- National BSA: [Scouting.org](https://www.scouting.org)
 - Troop Leader resources: <https://troopleader.scouting.org/>
- Religious awards information: <https://stlbsa.org/advancement-awards/religious-emblems-program/>
- Scout supplies: <https://www.scoutshop.org/>
- Leader succession planning: <https://stlbsa.org/resources/resources-toolbox/>
- Council apparel and camp goods: <https://gatewaytraders.org/>
- Scoutbook: <https://scoutbook.scouting.org/>
- Training and unit resource: <https://my.scouting.org/>

CAMP PROPERTIES

COME EXPLORE WITH US

S-F Scout Ranch

120 US-67
Farmington, MO 63640

One of the foremost Scout camps in America, "The Ranch" features 5,200 wooded acres including Nim's Lake, a 270-acre swimming, boating, and fishing facility at the heart of the property. The 3-Notch Trail system explores all points of S-F and offers a great experience for backpacking, trail cooking, and team building.

Leadership Hall is our 16,000 square foot climate-controlled dining facility, complete with AV capabilities, private restrooms, and a large stone fireplace.

S-F features the "tree houses," which are elevated, 3-sided bunk structures on the edge of Nim's Lake. Additional cabins are located near the camporee field and at Swift Base. Adirondack and tipi camping is also available. Don't forget to visit Castle Rock, one of the most popular destinations at S-F!

Camp Warren Levis

5500 Boy Scout Lane
Godfrey, IL 62035

Camp Warren Levis, located just north of Alton IL, is 250 rolling acres of outdoor fun. A beautiful private lake accommodates boating and fishing activities.

Swaim Lodge Dining Hall, is climate controlled in the winter and seats up to 200 people.

Program areas include a bouldering wall, canoes, pedal boats, council ring, GaGa pit, pool, archery, BB guns, rifle, climbing/rappelling at Pere Marquette State Park, and a chapel.

Camp Lewallen

1588 Wayne Route K
Silva, MO 63964

Located along the St. Francis River in Southeast Missouri, Camp Lewallen features a new Climbing Complex, all terrain vehicle programs, a serene private lake, and large open fields.

The Earl Jarvis Dining Hall is a large dining facility with plenty of meeting room and a large fireplace.

Mount Logan serves as the backdrop to this Scouters' paradise, and features two trails to explore its beautiful view.

Visit www.stlbsa.org
for more information about the
properties and to make reservations.



CAMP PROPERTIES

COME EXPLORE WITH US

Beaumont Scout Reservation

6480 Beaumont Reservation Dr,
High Ridge, MO 63049

In Southwestern St. Louis County sits 2,400 acres of wooded, rolling hills and adventure called the Beaumont Scout Reservation. This multi-use property is located just 20 minutes from downtown St. Louis.

Beaumont offers countless activities and facilities for Scouts, featuring:

- New climbing complex
- Mud Cave exploration
- Swimming pool
- High and low challenge courses
- Cub World
- Nagel Explorer Base (home of the council's horse programs),
- 8 Cabins (including climate-controlled options)

At the heart of Beaumont is the Emerson Center, a multi-use dining and meeting facility. This building includes:

- 5,000+ square foot dining hall
- Climate-controlled comfort
- Two built-in AV areas
- Large industrial kitchen
- Multiple breakout rooms

The Emerson Center is commonly used for Blue and Gold banquets, Courts of Honor, various trainings, and other large events.

Rhodes France Scout Reservation

815 North 500 East Road, Pana, IL 62557

Rhodes France is located about 40 minutes south of Decatur, Illinois.

With two lakes, an in-ground swimming pool, excellent shooting sports facilities, and a well-stocked trading post, Scouts will never be short of things to do.

Pine Ridge Scout Camp

1139 Pine Ridge Lane, Makanda, IL 62958

Tall pines, abundant wildlife, Little Grassy Lake, and beautiful sunsets make Pine Ridge Scout Camp an excellent location for Scouts. This 150-acre camp is just southeast of Carbondale, Illinois. Kayaking, canoeing, fishing, and more.

Two cabins, dining facility, pavilion, and many beautiful campsites are available to enjoy.

Visit www.stlbsa.org

for more information about the
properties and to make reservations.



Property Comparison

Feature	Beaumont Scout Reservation	S F Scout Ranch	Rhodes France Scout Reservation	Camp Warren Levis	Pine-Ridge	Camp Lewallen	Baker Lodge	Kickapoo
Cabin Type								
Bunkhouse-style cabins	X	X			X		X	
Family/small group cabins			X					
Adirondacks (3-sided open air cabin)	X	X						
Activities								
Challenge/COPE course	X	X						
Council Ring (outdoor amphitheater)	X	X	X	X	X	X		
Climbing and/or rappelling	X	X		X				
Pool (summer only)	X		X					
Horse Programs	X							
Archery Range	X	X	X	X	X	X		
Shotgun Range	X	X	X	X		X		
Rifle Range	X	X	X	X		X		
BB Range	X	X	X	X	X	X		
Paddlecraft (kayaks, canoes, rowboats)		X		X				
Sailing		X						
Fishing		X	X	X	X	X	X	X
Business								
Hi-Speed Internet	X	X		X				
Audio/Visual (Projector, screen, speakers)	X	X	X					
Small group (<50) indoor meeting space	X	X	X	X	X			
Large group (>50) indoor meeting space	X	X	X	X				
Indoor Commercial Kitchen	X	X	X	X	X	X	X	
Outdoor Chapel	X			X		X		

~OUTDOOR ADVENTURES AWAIT~

Greater St. Louis Area Council Challenge Course and Climbing - Program and Training Overview

The Greater St. Louis Area Council offers multiple Challenge Course and Climbing opportunities for our Scouts. These include two different High and Low Ropes courses, climbing towers at Beaumont, Lewallen and Camp Warren Levis, and natural rock face climbing and rappelling.

Training and Reserving Sites and/or Gear

TO REGISTER FOR TRAINING: Register and pay online using the links on our training page: <https://stlbsa.org/training/challenge-course-climbing/>

TO REGISTER TO USE THE CHALLENGE COURSE OR CLIMBING GEAR:

Register as explained during training for one or two spots on any Saturday or Sunday; the Challenge Course site, Climbing Towers and Climbing gear are reserved using the same system as you use to reserve a campsite.

IMPORTANT: ONLY CERTIFIED INSTRUCTORS MAY "CHECK OUT" CHALLENGE COURSE AND CLIMBING GEAR. The unit is required to provide one or two trained and qualified instructors.

Instructor Training Details

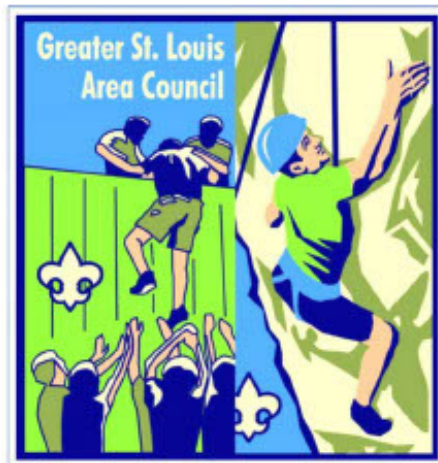
The initial training for the CHALLENGE COURSES, CLIMBING TOWERS and ROCK CLIMBING AND RAPELLING are conducted twice each year. Each initial training includes a Wednesday evening meeting at Beaumont, and a weekend training from early Saturday morning until Sunday evening. To use the Beaumont Challenge Course, instructors should take the one-day orientation which usually follows the main S Bar F training.

Timing of Training Events

Training	Location	Spring Training	Fall Training
Challenge Course	S Bar F	May	October
Beaumont Orientation	Beaumont	June	October
Rock Climbing & Rappelling	S Bar F	June	August
Climbing Towers	Beaumont & Warren Levis	May	October
<i>Tower Training is also offered at Camp Lewallen summer camp every week</i>			
Recertification	Beaumont	March	September

After you have completed the training, you demonstrate your skills during a unit outing to become certified. Once certified, you can re-certify every two years.

Training activities are supervised by experienced Course Directors and Training Staff



Benefits of Challenge Course and Rock Climbing/ Rappelling for your Unit

Challenge Courses provide an opportunity for each participant to achieve success as an individual and as a member of a patrol or team. The objectives include building confidence, developing leadership skills, and attaining a sense of common cooperation among team members.

Rock Climbing & Rappelling have become very popular because they provide excitement and a challenge as the participants attempt to master the rock face or tower. Tower climbing provides a similar thrill but can be accomplished any time, since the towers are lit for night climbing.

Age Requirements

Scouts BSA units and Venture Crews are eligible to participate in the Challenge Courses and tower or natural rock face climbing and rappelling.

Cub Scouts are eligible for Tower climbing only (no rappelling).

Adults must be 21 years or older to take Challenge Course, Rock Climbing or Tower training.

Questions? Contact the Challenge and Climbing Training Director
gslac.cc.training@gmail.com



HORSE PROGRAMS

Several opportunities exist with the Greater St. Louis Area Council's herd of horses. Come out and enjoy a trail ride, or horse camp!

TRAIL RIDES

Scouts BSA, Venturers, and Explorers can hit the trail, beginning and ending at Nagel Base. Approximately 10 horses are available for each 1 ½ hour ride and each horse can handle all levels of riding experience — beginner through advanced. Rides are available Saturday and/or Sunday, August 20 - December 6 and March 1 - May 8. \$20 per person.

HORSE CAMP – July 23-29, 2023 & July 21-27, 2024

Spend a week at an intermediate riding camp cantering around Beaumont and learning more about horses. There are many trails to be ridden, competitions and games to be played on horseback in the riding ring, and other activities to further your horsemanship along with a chance to show off your advanced skills in a Cavalcade at the end of the week. Other activities while at Horse Camp are swimming, skeet shooting, climbing tower, ropes course, campfires, and much more. You must be at least 14 years old and pass a riding test prior to camp to make sure everyone is at an advanced level. The riding test must be taken by July 18th before signing up. Please arrange your test with Wrangler Jordan Mutert @ Jordan.mutert@scouting.org.

Learn more @ <https://stlbsa.org/camps/scouts-bsa-venturing-summer-camp/>.

HORSEMANSHIP MERIT BADGE SKILL CENTER – March 2024

The Horsemanship Merit Badge Skill Center provides Scouts with knowledge of how to care, groom and ride a horse. The skill center begins with an orientation session and then is held over three Saturdays: March 9, 16, and 23. In addition to learning how to safely ride and care for horses, Scouts who earn this merit badge will gain an understanding of horse's instincts and behaviors, as well as humane and effective methods for training horses. Recommended age is 14 or older. Registration will be available at <https://stlbsa.org/advancement-awards/merit-badges/>.

THINGS TO KNOW

Reservations for horses must be made at least two weeks in advance at a Greater St. Louis Area Council office or online by visiting <https://campreservation.com/312/Home>.

A minimum of five and a maximum of 10 horses can be reserved for trail rides. A maximum of 20 people are allowed on a hayride wagon. Learn more @ <https://stlbsa.org/scouts-bsa-calendar/>.



SCOUTS BSA SUMMER CAMP

5 CAMPS TO CHOOSE FROM!

CAMP LEWALLEN

All Terrain Vehicle Program, 3-Part Climbing Complex, St. Francois River floating. Mt. Logan overnight treks, Cooking competitions. Wayfinder First-Year Camper Program

CAMP GAMBLE @ S-F Scout Ranch

270-acre Nim's Lake, Water sports, Fishing & Fly Fishing

Patrol method cooking, STEM merit badges & Nova awards, Horsemanship, Huck's Cove Water Park, Wayfinder first-year camper program

RHODES FRANCE SCOUT RESERVATION

Pistol Safety & Marksmanship
Wayfinder first-year camper program
Baden Powell Patrol Award
Duty to God
Trailblazers Merit Badge Program

CAMP FAMOUS EAGLE @ S-F Scout Ranch

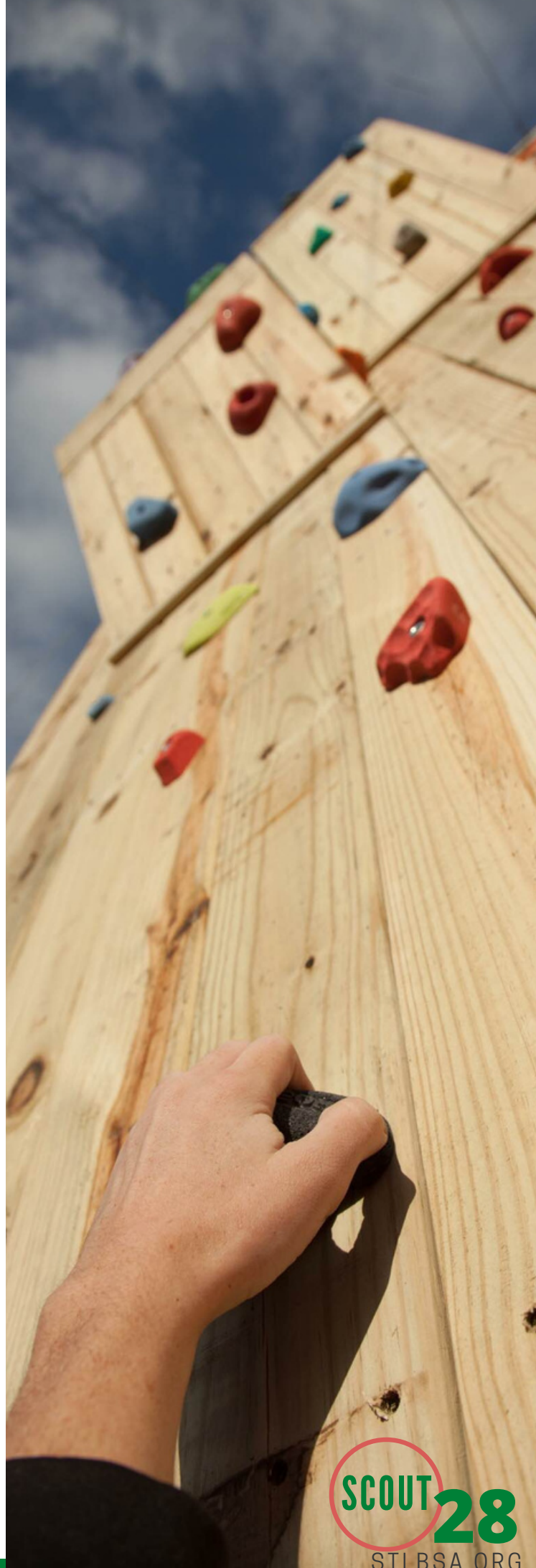
270-acre Nim's Lake, Water sports,
16,000 sq. ft dining hall, STEM merit badges,
Huck's Cove Water Park,
Wayfinder first-year camper program
Provisional Camping

SWIFT HIGH ADVENTURE BASE @ S-F Scout Ranch

(VENTURERS & OLDER SCOUTS)

Challenge courses & climbing, Horseback riding
Sailing, Dancing, Off-camp excursions
Mountain boarding, Tubing & skiing

LEARN MORE & REGISTER @
<https://stlbsa.org/camps/>



SPECIALTY CAMPS

What is a Specialty Camp?

Specialty camps offer programs focused on a particular interest. All specialty camps can be attended individually, with the adult staff providing leadership and guidance. Check them out in 2023 and in 2024!

S-F Ranger Program



Explore the back country of S-F

Blacksmith

Black powder rifle shooting

Cook trail meals

Explore old homesteads

Qualifies for 2nd Week Discount

Full 2024 camp details will be released this Fall

Eagle Trail



Eagle-required merit badges

Life-to-Eagle process

Cultural programs

STEM merit badges and Novas

Sessions in late July and December

Skilled Trades Camp

Enjoy a week of camp with an emphasis on learning about careers and trades!

Multiple trades and career related merit badges @ Swift High Adventure Base.

Leadership is provided for all who attend!

Qualifies for 2nd Week Discount

STEM Week



50 STEM merit badges to choose from!

Visits by engineers, chemists, mathematicians, and more!

NOVA Awards

Evening STEM programs and exhibits

Qualifies for 2nd Week Discount

Horse Camp



Horsemanship

Trail rides

Swimming

Shooting Sports

Climbing

Challenge Courses



STLBSA.ORG

CAN'T ATTEND CAMP WITH YOUR TROOP? JOIN OUR PROVISIONAL TROOP!

Scouts who can't attend summer camp with their troop can sign up for our provisional troop at Famous Eagle or older scouts can join a provisional crew at Swift Base! Leadership will be provided and Scouts can sign up individually. Scouts will have access to all of the programs offered at these camps.

CAMPERSHIPS

Every youth deserves the opportunity to attend summer camp, regardless of financial situation. The Greater St. Louis Area Council offers several ways for Scouts to earn their way to camp, including popcorn sales, camp cards, and coffee sales. For those Scouts who need additional assistance, camperships can be awarded to Scouts in need. A campership application is available at stlbsa.org

DISCOUNTS

Second week discount: Attend a week of Scouts BSA or Venturing summer camp and get \$100 off a second week of camp (excludes National Youth Leadership Training, and Horse camp). Or, get \$50 off a GSLAC camp if you spend a week at another council's camp or high-adventure base.

Family discount: A \$100 discount is available for siblings who also attend a GSLAC Scouts BSA camp.

CAMP STAFF THE ULTIMATE CAMP EXPERIENCE

Each year, the Greater St. Louis Area Council hires dedicated and passionate individuals to serve on summer camp staff. Staff members help provide a fun, positive experience for campers— while earning a salary! They also have the opportunity to earn a college scholarship worth up to \$1,250.

Check the Camp Staff page at stlbsa.org later this Fall for the 2024 Camp Staff application and interview information.

TAKE CAMP STAFF FOR A TEST DRIVE AS A CIT!

The Counselor In Training (CIT) Program allows Scouts who are 14 or 15 years old to participate for up to three weeks as a volunteer camp staff member. Participants work in several program areas, giving them the experience to decide if working as a full-time camp staff member in the future is something they would enjoy. The program is conducted at Camp Warren Levis, Rhodes-France, and Camp May. Lodging and meals will be provided. CIT applicants will take part in the camp staff interviews in late 2024.



September 2023

AH -Arrowhead BM- Big Muddy BG – Black Gold BT – Boone Trails CM – Cahokia Mounds
 CH – Cherokee EG – Egyptian GT – Gravois Trail IL – Illini KA – Kaskaskia KE – Keystone
 NH – New Horizons NS – North Star OS – Osage OT – Ozark Trailblazers PF – Pathfinder
 PB – Piassa Bird RD – Redhawk RT – River Trails SE – Soaring Eagle SH – Shawnee SX – Sioux
 Camps: BR (Beaumont), CL (Camp Lewallen), PR (Pine Ridge), RF (Rhodes France), & WL (Warren Levis)

Sunday	Monday	Tuesday	Wednesday	Thursday	Friday	Saturday
					1 Popcorn Sale Begins Show and Sell Pickup	2 Basic Instructor Training - BR
3 Anpetu-We Lodge Reunion Shawnee Lodge Reunion Nisha Kittan Lodge Fall Reunion	4 Labor Day Office Closed Roundtable: KE, PF	5 Roundtable: BT, CM, EG, GT, NH, SH, SX Commissioner: CM, SH, EG	6 Challenge Course Training - BR Eagle Board: OS, NH	7 Roundtable: BM, BG, KA, NS, OT, RT, SE Eagle Board: SH, KA Commissioner: KA, SE, BM, BG District Committee: KA, OA Chapter:	8 Anpetu-We Lodge Reunion Shawnee Lodge Reunion Nisha Kittan Lodge Fall Reunion	9 Anpetu-We Lodge Reunion Shawnee Lodge Reunion Nisha Kittan Lodge Fall Reunion
10 Rosh Hashana Back Country Ldr. Skills S-F Woapink Lodge Fall Fellowship Challenge Course S-f	11 Roundtable: CH District Committee: CH Eagle Board: BT	12 District Committee: GT Commissioner: BT, NH, OS	13 Roundtable: PB Commissioner: PB Eagle Board: NH	14 Roundtable: AH, RD District Committee: RH, SE Commissioner: RD, RT, AH Eagle Board: CM, SE, PB, PF Cub Launch: BG	15 Rosh Hashana Back Country Ldr. Skills S-F Woapink Lodge Fall Fellowship Woapink Lodge Exec Cmte Camporee: EG, BM	16 Rosh Hashana Back Country Ldr. Skills S-F Woapink Lodge Fall Fellowship Challenge Course S-F Camporee: EG, BM The Experience@The Ink House
17 Rosh Hashana Back Country Ldr. Skills S-F Woapink Lodge Fall Fellowship Challenge Course S-f	18 Rosh Hashana District Committee: KE, PF Commissioner: KE, PF	19 Roundtable: IL District Committee: CM, NH, OS, PB, SH Commissioner: GT	20 District Committee: BM, BG Eagle Board: OT Life to Eagle: NH	21 District Committee: IL, NS, RT, SX Commissioner: IL Eagle Board: BM, BT, CH, EG, SH	22 Venturing Fall Fun Rally 50 th Mom & Me Camporee: KA, BG Illinois Sporting Clays Cub Launch: SH Scouts Leader Training: GT	23 Venturing Fall Fun Rally 50 th Mom & Me Camporee: KA, BG Illinois Sporting Clays Cub Launch: SH Scouts Leader Training: GT
24 Yom Kippur Venturing Fall Fun Rally 50 th Mom & Me	25 Yom Kippur Eagle Board: PF	26	27 STEM Committee Meeting Eagle Board: NH	28 District Committee: OT Commissioner: OT Eagle Board: RT Merit Badge U: BG	29 Sukkot NYLT Fall Course #5 OA G&S Section Conclave Wood Badge Fall Course wkld 1	30 Sukkot NYLT Fall Course #5 OA G&S Section Conclave Wood Badge Fall Course wkld 1 Ldr Outdoor Experience RF

October 2023

AH -Arrowhead BM-Big Muddy BG-Black Gold BT-Boone Trails CM-Cahokia Mounds
 CH-Cherokee EG-Egyptian GT-Gravois Trail KA-Kaskaskia KE-Keystone
 NH-New Horizons NS-North Star OS-Osage OT-Ozark Trailblazers PF-Pathfinder
 PB-Piasa Bird RD-Redhawk RT-River Trails SE-Soaring Eagle SH-Shawnee SX-Sioux
 Camps: BR (Beaumont), CL (Camp Lewallen), PR (Pine Ridge), RF (Rhodes France), & WL (Warren Lewis)

Sunday	Monday	Tuesday	Wednesday	Thursday	Friday	Saturday
1 Sukkot NYLT Fall Course #5 OA G&S Section Conclave Wood Badge Fall Course wk1 1 Ldr Outdoor Experience RF Challenge & Climbing Recert.	2 Roundtable: CH, KE, PF District Committee: CH	3 Commissioner: CM, SH, EG Roundtable: GT, BT, CM, NH, SH, SX, EG	4 Eagle Board: OS, NH	5 Roundtable: KA, SE, BM, BG, NS, RT, OT Eagle Board: KA, SH Commissioner: KA, SE, BM, BG District Committee: KA, AH	6 Simchat Torah & Shmini Atzeret Camporee: OS, CM, PB, NS Webeloree: RT	7 Simchat Torah & Shmini Atzeret Intro to Outdoor Skills BR NRA Shotgun Inst. Course BR Climbing Tower Trn - WL Climbing Tower Trn - BR Cub Launch Camporee: OS, CM, PB, NS Webeloree: RT
8 Intro to Outdoor Skills BR NRA Shotgun Inst. Course BR Woapink Lodge LEC Camporee: OS, CM, PB, NS Webeloree: RT	9 Eagle Board: BT Roundtable: KE, PF	10 District Committee: GT Commissioner: BT, NH, OS	11 Roundtable: PB Commissioner: PB Challenge Course Training Eagle Board: NH	12 District Committee: SE, RD Commissioner: AH, RD, RT Eagle Board: CM, SE, PB, PF Roundtable: RD, AH	13 Spookoree - RF VSOA Office Orientation - BR Camporee: PF, RT	14 Spookoree - RF VSOA Office Orientation - BR Ldr Outdoor Experience - BR Wood Badge Fall Course wk2 2 Fall Fright Fest Map & Compass Adult Trn - BR Camporee: PF, RT
15 Spookoree - RF Ldr Outdoor Experience - BR Wood Badge Fall Course wk2 2 Camporee: PF, RT	16 District Committee: KE Commissioner: KE, PF	17 Roundtable: IL District Committee: BT, CM, NH, OS, SH, PB Commissioner: GT	18 District Committee: BM, BG Commissioner: BM	19 District Committee: IL, NS, RT, SX Commissioner: IL	20 Haunted Hayrides - WL Camporee: SH, BT, GT	21 Haunted Hayrides - WL Nisha Kittan Brotherhood - WL Scoutbotics at SLU Camporee: SH, BT, GT
22 Haunted Hayrides - WL Camporee: SH, BT, GT	23 Final Popcorn Orders Due Popcorn Sale Ends Eagle Board: PF	24	25 Eagle Board: NH	26 District Committee: OT Eagle Board: RT Commissioner: OT	27 Haunted Hayrides - WL Camporee: NH	28 Haunted Hayrides - WL Anpetu-We Lodge Ldr Develop. 1 st Class Rank Orienteering - BR Camporee: NH Life to Eagle: OS
29 Haunted Hayrides - WL Challenge Course Training - BR Camporee: NH	30	31 Halloween				

November 2023

AH -Arrowhead BM-Big Muddy BG – Black Gold BT – Boone Trails CM – Cahokia Mounds
 CH – Cherokee EG – Egyptian GT – Gravois Trail KA – Kaskaskia KE – Keystone
 NH – New Horizons NS – North Star OS – Osage OT – Ozark Trailblazers PF – Pathfinder
 PB – Piassa Bird RD – Redhawk RT – River Trails SE – Soaring Eagle SH – Shawnee SX – Sioux
 Camps: BR (Beaumont), CL (Camp Lewallen), PR (Pine Ridge), RF (Rhodes France), & WL (Warren Lewis)

Sunday	Monday	Tuesday	Wednesday	Thursday	Friday	Saturday
			1 All Saints Day (Catholic) Eagle Board: OS, NH	2 Roundtable: KA, SE, RT, NS, BM, BG, OT Eagle Board: KA, SH Commissioner: KS, SE, BM, BG, NS District Committee: KA OA Chapter: BG, SE, KA	3 CPR/AED & Wilderness 1 st Aid	4 CPR/AED & Wilderness 1 st Aid University of Scouting
5 USA Archery Lvl 1 Coach Trng. Woapink Lodge Ldr. Develop.	6 Eagle Board: BT Roundtable: PF, CH District Committee: CH	7 Commissioner: SH, CM Roundtable: OS, SH, BT, CM, NH, GT, EG, SX	8 BSA's Birthday Roundtable: PB Commissioner: PB Eagle Board: NH	9 Roundtable: AH, RD Eagle Board: SE, CM, PB, PF Commissioner: RD, RT, AH District Committee: SE, RD OA Chapter: NH, BT	10 Observance Veterans Day - Scout offices closed CPR/AED Training BR	11 Veterans Day Scouting for Food Bag Out Day
12	13 District Committee: KE Commissioner: KE	14 District Committee: GT Commissioner: OS, BT, NH Eagle Board:	15 District Committee: BM OA Chapter: OS Life to Eagle: NH	16 District Committee: RT, NS, SX	17 Einstein Recognition Dinner	18 Scouting for Food Bag Collection Post SFF Bowling party: GT
19 OA Chapter: PF	20 Commissioner: PF District Committee: PF	21 Roundtable: IL District Committee: OS, SH, BT, CM, PB Commissioner: GT Eagle Board: KE	22	23 Thanksgiving (offices closed)	24 Council offices closed	25
26	27 Eagle Board: PF	28 District Committee: NH	29	30 District Committee: OT, IL Commissioner: OT, IL		

December 2023

AH -Arrowhead BM-Big Muddy BG – Black Gold BT – Boone Trails CM – Cahokia Mounds
 CH – Cherokee EG – Egyptian GT – Gravois Trail KA – Kaskaskia KE – Keystone
 NH – New Horizons NS – North Star OS – Osage OT – Ozark Trailblazers PF – Pathfinder
 PB – Piassa Bird RD – Redhawk RT – River Trails SE – Soaring Eagle SH – Shawnee SX – Sioux
 Camps: BR (Beaumont), CL (Camp Lewallen), PR (Pine Ridge), RF (Rhodes France), & WL (Warren Lewis)

Sunday	Monday	Tuesday	Wednesday	Thursday	Friday	Saturday
					1	2 Basic Instructor Trn. – BR Roundtable: SX
3 Anpetu-We Lodge Banquet Woapink Lodge Exec Cmte mtg	4 Roundtable: KE, PF, CH District Committee: CH Eagle Board: BT	5 Roundtable: OS, SH, BT, NH, GT, EG Commissioner: CM, SH, EG	6 Eagle Board: OS, NH	7 Hanukkah (Jewish) Roundtable: KA, SE, OT, NS, BM, BG, RT Eagle Board: SH, KA Commissioner: KA, SE, BM, BG District Committee: KA, AH	8 Hanukkah (Jewish)	9 Hanukkah (Jewish) STEM U UMSL
10 Hanukkah (Jewish)	11 Hanukkah (Jewish)	12 Hanukkah (Jewish) District Committee: OS, CM, NH, GT Commissioner: OS, NH, GT, BT	13 Hanukkah (Jewish) STEM Committee meeting Roundtable: PB Commissioner: PB Eagle Board: NH	14 Hanukkah (Jewish) Roundtable: AH Commissioner: AH, RT Eagle Board: CM, SE, PB	15 Hanukkah (Jewish)	16
17 Shawnee Lodge Banquet	18 District Committee: KE, PF Commissioner: KE, PF	19 Roundtable: IL District Committee: SH, BT, PB Eagle Board: KE	20 District Committee: BM, BG Eagle Board: OT	21 District Committee: SX, OT, NS, RT Commissioner: OT	22	23
24 Christmas Eve	25 Christmas (Christian) Council Offices Closed	26	27 Virtual Eagle Trail Workshop	28 Virtual Eagle Trail Workshop Eagle Board: RT	29 Virtual Eagle Trail Workshop	30
31 New Years Eve						

January 2024

AH - Arrowhead BM - Big Muddy BG - Black Gold BT - Boone Trails CM - Cahokia Mounds
 CH - Cherokee EG - Egyptian GT - Gravois Trail KA - Kaskaskia KE - Keystone
 NH - New Horizons NS - North Star OS - Osage OT - Ozark Trailblazers PF - Pathfinder
 PB - Piasa Bird RD - Redhawk RT - River Trails SE - Soaring Eagle SH - Shawnee SX - Sioux
 Camps: BR (Beaumont), CL (Camp Lewallen), PR (Pine Ridge), RF (Rhodes France), & WL (Warren Lewis)

Sunday	Monday	Tuesday	Wednesday	Thursday	Friday	Saturday
	1 New Years Day Council offices closed	2 Roundtable: BT, OS, SH, CM, PF, NH, GT, SX Commissioner: SH, CM	3 Eagle Board: OS, NH	4 Roundtable: KA, SE, OT, RT, NS, BM, BG Commissioner: KA, SE, BM, BG, NS District Committee: KA, AH Eagle Board: KA	5	6 Orthodox Christmas Eve Nisha Kittan Banquet NRA Rifle Instructor Crse - BR STEM U SEMO
7 Orthodox Christmas NRA Rifle Instructor Crse - BR District Dinner: OT	8 Roundtable: KE, CH District Committee: CH	9 Commissioner: BT, OS, NH District Committee: GT	10 Roundtable: PB Commissioner: PB Eagle Board: NH	11 Commissioner: AH, RD, RT District Committee: SE, RD Eagle Board: SH, CM, SE, PB, PF Roundtable: AH, RD	12 Ultra Running Group - BR CPR/AED & Wilderness 1 st Aid Klondike: CM, PB	13 Ultra Running Group - BR STL After Dark VSOA Woapink Lodge Banquet Klondike: SH, CM, PB
14 Ultra Running Group - BR STL After Dark VSOA Klondike: SH District Dinner: OS	15 MLK Jr. Day (offices closed) Ultra Running Group - BR District Committee: KE Commissioner: KE	16 Roundtable: IL District Committee: BT, OS, SH, CM, NH, PB Commissioner: GT Eagle Board: KE	17 District Committee: BM, BG Eagle Board: OT Be A Scout Day: OT	18 District Committee: SX, RT, NS District Dinner: NH	19 Nisha Kittan Ldr Develop. WL District Dinner: BT	20 Nisha Kittan Ldr Develop. WL Craftsmen Merit Badge Wksp. Klondike: GT
21 Nisha Kittan Ldr Develop. WL	22 District Committee: PF Commissioner: PF Eagle Board: PF	23	24 Eagle Board: NH	25 District Committee: OT Commissioner: OT Eagle Board: RT	26 Klondike: NH District Dinner: SH	27 STEM U SIUE Klondike: NH, BT District Dinner: AH
28 Klondike: NH District Dinner: PF	29	30	31			

February 2024

AH -Arrowhead BM-Big Muddy BG -Black Gold BT -Boone Trails CM -Cahokia Mounds
 CH -Cherokee EG -Egyptian GT -Gravois Trail KA -Kaskaskia KE -Keystone
 NH -New Horizons NS -North Star OS -Osage OT -Ozark Trailblazers PF -Pathfinder
 PB -Piasa Bird RD -Redhawk RT -River Trails SE -Soaring Eagle SH -Shawnee SX -Sioux
 Camps: BR (Beaumont), CL (Camp Lewallen), PR (Pine Ridge), RF (Rhodes France), & WL (Warren Lewis)

Sunday	Monday	Tuesday	Wednesday	Thursday	Friday	Saturday
				1 Roundtable: KA, SE, OT, RT, NS, BM, BG District Committee: KA Commissioner: KA, SE, NS, BM, BG Eagle Board: KA, SH OA Chapter: BG, KA	2	3 Council Coordinated Operating Committees Meeting CCOCM Klondike: OS, OT District Hike: OS District Dinner: PB
4 Scout Sunday OA Chapter: NH	5 Roundtable: KE, PF, CH District Committee: CH	6 Commissioner: SH, CM, EG Roundtable: OS, SH, CM, NH, GT, BT, SX, EG	7 Eagle Board: OS, NH	8 BSA's Birthday Roundtable: AH, RD Eagle Board: SE, CM, PF Commissioner: RD, RT, AH District Committee: SE, RD OA Chapter: BT	9 Klondike: BM, EG, RT	10 NRA Shotgun Instruct. Trn. S-F Klondike: BM, EG, AH, RT
11 NRA Shotgun Instruct. Trn. S-F	12 Lincoln's Birthday	13 District Committee: GT Commissioner: OS, NH, BT	14 Ash Wednesday (Christian) Valentine's Day Roundtable: PB Commissioner: PB Eagle Board: NH	15 District Committee: RT, NS, SX	16 CPR/AED & Wilderness 1 st Aid NYLT Staff Dev. #1 - BR District Dinner: KE	17 CPR/AED & Wilderness 1 st Aid NYLT Staff Dev. #1 - BR District Dinner: KA, BG Merit Badge U: OT
18. CPR/AED & Wilderness 1 st Aid	19 President's Day (offices closed) District Committee: KE Commissioner: KE	20 Roundtable: IL District Committee: OS, SH, CM, NH, BT, PB Commissioner: GT Eagle Board: KE	21 Eagle Board: OT District Committee: BM, BG OA Chapter: OS	22 Washington's Birthday Eagle Board: RT District Dinner: SE	23 Klondike: KA, SE, BG	24 Map & Compass Adult Ldr. Trn. STEM U SIUC Klondike: KA, SE, BG District Pinewood: PB SEMO Boyce Scout Ball: SH
25	26 Wood Badge Info. Dinner District Committee: PF Commissioner: PF Eagle Board: PF	27	28 Eagle Board: NH	29 District Committee: OT Commissioner: OT		

March 2024

AH -Arrowhead BM- Big Muddy BG – Black Gold BT – Boone Trails CM – Cahokia Mounds
 CH – Cherokee EG – Egyptian GT – Gravois Trail KA – Kaskaskia KE – Keystone
 NH – New Horizons NS – North Star OS – Osage OT – Ozark Trailblazers PF – Pathfinder
 PB – Piassa Bird RD – Redhawk RT – River Trails SE – Soaring Eagle SH – Shawnee SX – Sioux
 Camps: BR (Beaumont), CL (Camp Lewallen), PR (Pine Ridge), RF (Rhodes France), & WL (Warren Levis)

Sunday	Monday	Tuesday	Wednesday	Thursday	Friday	Saturday
					1 Camporee: NS	2 Commissioner College NRA RSO Training – BR SEMO Merit Badge U Camporee: NS
3 Challenge & Climbing Recert BR USA Archery Lvl. 1 Coach Trn. Camporee: NS	4 Roundtable: PF, KE, CH District Committee: CH	5 Roundtable: OS, EG, SH, CM, GT, BT, SX Commissioner: SH, CM, EG	6 Roundtable: NH Eagle Board: NH, OS	7 Roundtable: OT, BM, NS, KA, SE, BG, RT Eagle Board: SH, KA Commissioner: KA, SE, BM, BG, NS District Committee: AH, KA	8	9 Horsemanship MB Skill Cntr. 1 Scout Orienteering Festival BR District Pinewood: BT, KE
10	11	12 District Committee: GT Commissioner: OS, BT	13 Roundtable: PB Commissioner: PB, NH Eagle Board: NH	14 Roundtable: AH, RD District Committee: SE, RD Commissioner: AH, RD, RT Eagle Board: CM, SE, PB, PF	15 Nisha Kittan Native American Culture Weekend – WL	16 Nisha Kittan Native American Culture Weekend – WL CPR/AED & Wilderness 1 st Aid Horsemanship MB Skill Cntr. 2 STEM College Lake Land District Pinewood: OS, OT, KA
17 St. Patrick's Day Nisha Kittan Native American Culture Weekend – WL CPR/AED & Wilderness 1 st Aid	18 Eastern Orthodox Lent Begins District Committee: PF, KE Commissioner: PF, KE	19 Roundtable: IL District Committee: OS, SH, CM, BT, PB Commissioner: GT Eagle Board: KE	20 District Committee: NH, BM, BG Eagle Board: OT	21 District Committee: SX, NS, RT, IL	22 Taste of Venturing – WL NYLT Staff Dev. #2 – BR	23 Taste of Venturing – WL NYLT Staff Dev. #2 – BR Horsemanship MB Skill Cntr. 3 Shoot O Ree
24 Palm Sunday (Christian) Taste of Venturing - WL	25 Eagle Board: PF	26	27 Eagle Board: NH	28 Holy Maundy Thursday (Christian) District Committee: OT Commissioner: OT Eagle Board: RT	29 Good Friday (Christian) (offices closed)	30
31 Easter (Christian)						

April 2024

AH -Arrowhead BM- Big Muddy BG – Black Gold BT – Boone Trails CM – Cahokia Mounds
 CH – Cherokee EG – Egyptian GT – Gravois Trail KA – Kaskaskia KE – Keystone
 NH – New Horizons NS – North Star OS – Osage OT – Ozark Trailblazers PF – Pathfinder
 PB – Piasa Bird RD – Redhawk RT – River Trails SE – Soaring Eagle SH – Shawnee SX – Sioux
 Camps: BR (Beaumont), CL (Camp Lewallen), PR (Pine Ridge), RF (Rhodes France), & WL (Warren Lewis)

Sunday	Monday	Tuesday	Wednesday	Thursday	Friday	Saturday
	1 Roundtable: KE, PF, CH District Committee: CH	2 Roundtable: OS, SH, CM, NH, GT, EG, BT, SX Commissioner: SH, CM, EG	3 Eagle Board: OS, NH	4 Roundtable: KA, SE, OT, RT, NS, BM, BG Commissioner: KA, SE, BM, BG, NS District Committee: KA Eagle Board: SH, KA	5 Solar Eclipse Council Festivals at PR, CL, and S-F Camporee: GT	6 Solar Eclipse Council Festivals at PR, CL, and S-F BSA Lifeguard Training Back Country Ldr. Skills S-F Commissioner: OS Camporee: GT Life to Eagle: OS
7 Solar Eclipse Council Festivals at PR, CL, and S-F Back Country Ldr. Skills S-F BSA Aqua Supervision - Swimming & Water Rescue Camporee: GT	8 Solar Eclipse Council Festivals at PR, CL, and S-F	9 Commissioner: NH, BT District Committee: GT	10 Roundtable: PB Commissioner: PB Eagle Board: NH	11 Commissioner: RD, RT, AH District Committee: SE, RD Eagle Board: CM, SE, PB, PF Roundtable: AH, RD	12 Intro to Leadership Skills BR Shawnee Ldg Spring Conclave Anpetu-We Spring Reunion Nisha Kittan Spring Fellowship Trail Guide Training BR	13 Intro to Leadership Skills BR Shawnee Ldg Spring Conclave Anpetu-We Spring Reunion Nisha Kittan Spring Fellowship
14 Intro to Leadership Skills BR Shawnee Ldg Spring Conclave Anpetu-We Spring Reunion Nisha Kittan Spring Fellowship	15 Venturing Awards Deadline District Committee: KE, PF Commissioner: KE, PF	16 Roundtable: IL District Committee: OS, SH, CM, NH, BT, PB Commissioner: GT Eagle Board: KE	17 District Committee: BM, BG Eagle Board: OT	18 District Committee: SX, RT, NS	19 CPR/AED & Wilderness 1 st Aid Parent & Pal – WL NYLT Staff Dev. #3 – BR Camporee: OT Fore the Scouts Golf Event: SH	20 CPR/AED & Wilderness 1 st Aid Parent & Pal – WL NYLT Staff Dev. #3 – BR Camporee: OT District Dinner: RD District Pinewood: BG
21 CPR/AED & Wilderness 1 st Aid Parent & Pal – WL Camporee: OT	22 Passover (Jewish) Eagle Board: PF	23 Passover (Jewish)	24 Passover (Jewish) Council STEM Committee Eagle Board: NH	25 Passover (Jewish) District Committee: OT Commissioner: OT Eagle Board: RT	26 Passover (Jewish) Camporee: EG, BM, OS, SH, KE, RT SEMO CL Fish Tourney: SH	27 Passover (Jewish) Cub Scout Range Master Trn. Special Needs Awareness Trn. Unit Pre-camp Swim Tests Camporee: EG, BM, BT, OS, SH, KE, RT Scouts Leader Training: GT
28 Passover (Jewish) Camporee: OS, SH, KE, RT	29 Passover (Jewish)	30				

May 2024

AH - Arrowhead BM - Big Muddy BG - Black Gold BT - Boone Trails CM - Cahokia Mounds
 CH - Cherokee EG - Egyptian GT - Gravois Trail KA - Kaskaskia KE - Keystone
 NH - New Horizons NS - North Star OS - Osage OT - Ozark Trailblazers PF - Pathfinder
 PB - Piasa Bird RD - Redhawk RT - River Trails SE - Soaring Eagle SH - Shawnee SX - Sioux
 Camps: BR (Beaumont), CL (Camp Lewallen), PR (Pine Ridge), RF (Rhodes France), & WL (Warren Levis)

Sunday	Monday	Tuesday	Wednesday	Thursday	Friday	Saturday
			1 Eagle Board: OS, NH	2 Roundtable: BM, OT, RT, KA, CM, SE, NS, BG Eagle Board: KA Commissioner: KA, SE, BM, BG, CM, NS District Committee: KA, AH OA Chapter: BG, KA	3 Woopink Ldg. Spring Fellowship Camporee: KA, PF	4 Woopink Ldg. Spring Fellowship BSA Aquatics Supervision - Paddle Craft Safety - CL Leader Outdoor Experience WL Climbing Tower Training - WL Climbing Tower Training - BR Camporee: CM, KA, PF Trap Shoot: OT
5 Eastern Orthodox Easter Woopink Ldg. Spring Fellowship BSA Aquatics Supervision - Paddle Craft Safety - CL Leader Outdoor Experience WL Camporee: KA, PF OA Chapter: PF	6 Roundtable: KE, PF, CH District Committee: CH	7 Commissioner: SH, EG Roundtable: EG, BT, OS, SH, GT, NH, SX	8 Roundtable: PB Commissioner: PB Eagle Board: NH	9 Roundtable: AH Eagle Board: SE, CM, SH, PB, PF Commissioner: AH, RD, RT District Committee: SE, RD OA Chapter: BT	10 Nisha Kittan Vigil Weekend WL	11 Nisha Kittan Vigil Weekend WL Cub Scout Rangemaster Trn. - Cape Girardeau office
12 Mother's Day	13	14 District Committee: OS, GT Commissioner: OS, BT, NH	15 Eagle Board: OT District Committee: BM, BG OA Chapter: OS	16 District Committee: RT, CM, NS, SX OA Chapter: NH	17 Wood Badge Spring Wknd 1	18 Challenge Course Trn. - S-F Wood Badge Spring Wknd 1 1 st Class Orienteering Event - BR Camporee: PB
19 Challenge Course Trn. - S-F Wood Badge Spring Wknd 1 VSOA Celebration Dinner	20 Commissioner: KE, PF District Committee: KE, PF	21 Roundtable: IL District Committee: BT, SH, NH, PB Commissioner: GT Eagle Board: KE	22 Eagle Board: NH	23 Eagle Board: RT Commissioner: IL District Committee: IL	24	25
26 Memorial Good Turn: GT Jewish Committee for Scouting - Good Turn	27 Memorial Day (offices closed)	28	29 Climbing Tower Training - BR	30 District Committee: OT Commissioner: OT	31	

June 2024

AH -Arrowhead BM-Big Muddy BG –Black Gold BT – Boone Trails CM – Cahokia Mounds
 CH – Cherokee EG – Egyptian GT – Gravois Trail KA – Kaskaskia KE – Keystone
 NH – New Horizons NS – North Star OS – Osage OT – Ozark Trailblazers PF – Pathfinder
 PB – Piasa Bird RD – Redhawk RT – River Trails SE – Soaring Eagle SH – Shawnee SX – Sioux
 Camps: BR (Beaumont), CL (Camp Lewallen), PR (Pine Ridge), RF (Rhodes France), & WL (Warren Lewis)

Sunday	Monday	Tuesday	Wednesday	Thursday	Friday	Saturday
						1 VSOA-Swift's Big Kick Off S-F Wood Badge Spring Wknd 2
2 STEM on CAMPus SEMO STEM on CAMPus EIU Anpetu-We Lodge LEC Wood Badge Spring Wknd 2	3 STEM on CAMPus SEMO STEM on CAMPus EIU Roundtable: PF, CH District Committee: CH Twilight Camp: SE	4 STEM on CAMPus SEMO STEM on CAMPus EIU Roundtable: OS, NH, SX Twilight Camp: SE	5 STEM on CAMPus SEMO STEM on CAMPus EIU STEM on CAMPus UMSL Eagle Board: OS, NH Twilight Camp: SE	6 STEM on CAMPus UMSL Roundtable: OT, RT, BG Commissioner: BG Eagle Board: SH Twilight Camp: SE	7 STEM on CAMPus UMSL Twilight Camp: SE	8 STEM on CAMPus UMSL
9 NYLT Course 1 – S-F	10 NYLT Course 1 – S-F	11 Shavout (Jewish) NYLT Course 1 – S-F Commissioner: OS, NH, OT	12 Shavout (Jewish) NYLT Course 1 – S-F Eagle Board: NH	13 NYLT Course 1 – S-F Commissioner: RD, RT District Committee: RD Eagle Board: CM, SE, PF	14 NYLT Course 1 – S-F	15 NYLT Course 1 – S-F
16 Father's Day NYLT Course 2 – S-F	17 NYLT Course 2 – S-F District Committee: PF, KE Commissioner: PF, KE Twilight Camp: PF, GT	18 NYLT Course 2 – S-F District Committee: OS, NH, PB Eagle Board: KE Twilight Camp: PF, GT	19 Juneteenth (offices closed) NYLT Course 2 – S-F District Committee: BG Eagle Board: OT Twilight Camp: PF, GT	20 NYLT Course 2 – S-F District Committee: SX, RT Twilight Camp: PF, GT	21 NYLT Course 2 – S-F Twilight Camp: PF	22 NYLT Course 2 – S-F
23 Challenge Course Orient. - BR	24 Eagle Board: PF	25	26 Eagle Board: NH	27 District Committee: OT Eagle Board: RT	28	29
30						

July 2024

AH - Arrowhead BM - Big Muddy BG - Black Gold BT - Boone Trails CM - Cahokia Mounds
 CH - Cherokee EG - Egyptian GT - Gravois Trail KA - Kaskaskia KE - Keystone
 NH - New Horizons NS - North Star OS - Osage OT - Ozark Trailblazers PF - Pathfinder
 PB - Piassa Bird RD - Redhawk RT - River Trails SE - Soaring Eagle SH - Shawnee SX - Sioux
 Camps: BR (Beaumont), CL (Camp Lewallen), PR (Pine Ridge), RF (Rhodes France), & WL (Warren Lewis)

Sunday	Monday	Tuesday	Wednesday	Thursday	Friday	Saturday
	1 Roundtable: CH District Committee: CH	2 District Committee: SX	3 Eagle Board: NH	4 Independence Day (offices closed)	5	6
7 NYLT Course 3 – S-F	8 NYLT Course 3 – S-F Twilight Camp: SH	9 NYLT Course 3 – S-F Commissioner: NH Twilight Camp: SH	10 NYLT Course 3 – S-F Eagle Board: OS, NH Twilight Camp: SH	11 NYLT Course 3 – S-F Commissioner: RD District Committee: RD Eagle Board: PB, CM, SE, PF Roundtable: OT Twilight Camp: SH	12 NYLT Course 3 – S-F Twilight Camp: SH	13 NYLT Course 3 – S-F
14 STEM Summer Camp	15 STEM Summer Camp Cub Scout Nova Camp Twilight Camp: SH, BG	16 STEM Summer Camp Cub Scout Nova Camp District Committee: PB Eagle Board: KE Twilight Camp: OT, SH, BG	17 STEM Summer Camp Cub Scout Nova Camp District Committee: BG Eagle Board: OT Twilight Camp: OT, SH, BG	18 STEM Summer Camp Cub Scout Nova Camp Commissioner: SX Twilight Camp: OT, SH, BG	19 STEM Summer Camp Twilight Camp: SH, BG	20 STEM Summer Camp
21 NYLT Course 4 – WL	22 NYLT Course 4 – WL Eagle Board: PF Twilight Camp: BG	23 NYLT Course 4 – WL Twilight Camp: BG	24 NYLT Course 4 – WL Eagle Board: NH Twilight Camp: BG	25 NYLT Course 4 – WL District Committee: OT Commissioner: OT Twilight Camp: BG	26 NYLT Course 4 – WL Twilight Camp: BG	27 NYLT Course 4 – WL
28 Horse Camp - BR	29 Horse Camp - BR	30 Horse Camp - BR	31 Horse Camp - BR			

August 2024

AH -Arrowhead BM- Big Muddy BG – Black Gold BT – Boone Trails CM – Cahokia Mounds
 CH – Cherokee EG – Egyptian GT – Gravois Trail KA – Kaskaskia KE – Keystone
 NH – New Horizons NS – North Star OS – Osage OT – Ozark Trailblazers PF – Pathfinder
 PB – Piasa Bird RD – Redhawk RT – River Trails SE – Soaring Eagle SH – Shawnee SX – Sioux
 Camps: BR (Beaumont), CL (Camp Lewallen), PR (Pine Ridge), RF (Rhodes France), & WL (Warren Lewis)

Sunday	Monday	Tuesday	Wednesday	Thursday	Friday	Saturday
				1 Horse Camp - BR Roundtable: OT, NH, BG, RT, KA, NS, BM District Committee: KA, AH Commissioner: KA, NS, BG, BM, Eagle Board: KA, SH OA Chapter: BG, KA	2 Horse Camp - BR	3 Horse Camp – BR Eagle Scout Association - Merit Badge Make Up - BR
4	5 Eagle Board: Roundtable: KE, PF, CH District Committee: CH	6 Commissioner: SH, EG Roundtable: SH, OS, GT, SX, EG, BT	7 Eagle Board: OS, NH	8 Roundtable: AH Eagle Board: CM, SE, PF Commissioner: AH, NH, RT	9 NYLT Course 5 – 1 st Wknd BR	10 NYLT Course 5 – 1 st Wknd BR Roundtable: PB Commissioner: PB OA Chapter: PF
11 NYLT Course 5 – 1 st Wknd BR Eagle Board: PB	12 OA Chapter: NH	13 District Committee: GT Commissioner: OS, BT	14 Climbing Training - BR OA Chapter: OS	15 Roundtable: RD District Committee: NH, RT, NS, SX, RD Commissioner: RD	16 NYLT Course 5 – 2 nd Wknd BR Woapink Lodge Induction Wkd District Committee: PB	17 NYLT Course 5 – 2 nd Wknd BR Woapink Lodge Induction Wkd Woapink Lodge Vigil Reunion
18. NYLT Course 5 – 2 nd Wknd BR Woapink Lodge Vigil Reunion	19 District Committee: KE, PF Commissioner: KE, PF	20 Roundtable: IL District Committee: SH, OS, BT Commissioner: GT Eagle Board: KE	21 Cub Leader Training Pt.2 Eagle Board: OT District Committee: BM, BG	22 Eagle Board: RT	23	24 Climbing Training – S-F Shawnee Lodge Ldr Develop.
25 Climbing Training – S-F Climbing Training - BR	26 Eagle Board: PF	27	28:	29 District Committee: OT Commissioner: OT	30	31

SCOUTING IS A PATH TO SUCCESS



Scouts are **TWICE** more likely to get a bachelor's degree (75.6% of Scouts alumni compared with 36.0% national average)



Scouts are **TWICE** more likely to get an advanced graduate degree (29.0% of Scouts alumni compared with 13.4% national average)



Scouts are more likely to make almost **DOUBLE** of the personal income as an adult (\$62.5k individual median income compared with \$33.7k national median)



Scouts are more likely to have very good or exceptional (750+) credit scores (55.7% of Scouts alumni compared with 39.7% national average)



Scouts are more likely to move up in their socio-economic status. Scouts that come from low-income family background are, on average, more likely to make almost twice the personal income as an adult compared to their non-scout peers with similar childhood family background.



SCOUTS ARE CHANGE AGENTS

BSA strives to bring larger, broader, and longer social impact. The BSA values (Character, Leadership, Citizenship, and Fitness) imprinted during childhood go a long way. BSA alumni continue to change the world by taking more leadership roles in organizations, engaging in more entrepreneurial activities, and undertaking more civic duties.



GREATER ST. LOUIS AREA COUNCIL
BOY SCOUTS OF AMERICA

STLBSA.ORG
314-256-3000

Mahendra Gupta, Virgil Professor of Accounting and Management and Former Dean Olin School of Business Washington University; Jack Zhang, 4th year Ph.D. student in Organizational Behavior at Washington University 2020

Scouts BSA Program Preview Guide