

2025 ANNUAL REPORT



GREATER ST. LOUIS AREA
SCOUTING

Committed To The
IDEALS OF SCOUTING



THE SCOUT OATH

On my honor I will do my best
To do my duty to God and my country
and to obey the Scout Law;
To help other people at all times;
To keep myself physically strong,
mentally awake, and morally straight.



THE SCOUT LAW

A Scout is:

TRUSTWORTHY. Tell the truth and keep promises. People can depend on you.

LOYAL. Show that you care about your family, friends, Scout leaders, school, and country.

HELPFUL. Volunteer to help others without expecting a reward.

FRIENDLY. Be a friend to everyone, even people who are very different from you.

COURTEOUS. Be polite to everyone and always use good manners.

KIND. Treat others as you want to be treated. Never harm or kill any living thing without good reason.

OBEDIENT. Follow the rules of your family, school, and pack. Obey the laws of your community and country.

CHEERFUL. Look for the bright side of life. Cheerfully do tasks that come your way. Try to help others be happy.

THRIFTY. Work to pay your own way. Try not to be wasteful. Use time, food, supplies, and natural resources wisely.

BRAVE. Face difficult situations even when you feel afraid. Do what you think is right despite what others might be doing or saying.

CLEAN. Keep your body and mind fit. Help keep your home and community clean.

REVERENT. Be reverent towards God. Be faithful in your religious duties. Respect the beliefs of others.

2025 Year in Review

79,462

*Total
Advancements*

28,135

Scouts Served

5th

Largest Council
IN SCOUTING

OUT OF 233 COUNCILS

TOP 3
Merit Badges

First Aid
Swimming
Citizenship in
the Community

\$302,690

*Financial Assistance
Provided*

1,893,637

Scouting for Food

Total Items Collected For

622

Local Pantries and
Hunger Relief Programs

5,706

Scouts Served
IN OUTREACH PROGRAMS

456

Eagle Scouts

531

Chartered Partners

8,951

*Total Camp
Experiences*

At Summer Camp and Discovery Base



GREATER ST. LOUIS AREA
SCOUTING

A Message From The **KEY THREE**



Children today, and many adults, face more challenges than ever. We live in an era of skyrocketing levels of mental health issues like anxiety, depression, and loneliness. People are more technologically connected than ever and often feel more isolated than ever. Scouting is the solution! During Scout activities, campouts, and meetings, Scouts learn in a safe environment by doing. They work together as a team, gain leadership skills, learn how to fail, but have the endurance to try again, and achieve group and individual goals. This is all built upon the firm core values anchored in the Scout Oath and Scout Law which is brought to life through fun and meaningful activities.

You are part of the largest youth development movement in our region. We change individual lives on a large scale. Whether you are a volunteer, donor, or community partner – thank you for advancing Scouting’s mission. As you see in this annual report, there is much for which to be thankful. However, our work is not complete. Children need Scouting and there are many young people who have not yet had the opportunity to join.

Together we can serve all young people with programs that prepare them for life. Thank you for believing in our mission with us. You are building a brighter future. Let’s celebrate the amazing impact and use it as a springboard. Because of you, Scouting is changing lives and positively impacting our communities.

Karen M. Vangyia
Council President

Ronald Stephens
Council Commissioner

Joseph D. Sadewasser
Scout Executive/CEO

18,637
Cub Scouts



584
Venturers



7,014
Scouts



8,115
Adult Leaders

1,900
Explorers

This Is **Scouting**



CUB SCOUTING

Through fun activities, challenging adventures, and community service projects, Cub Scouts make new friends and discover the importance of cooperation, citizenship, responsibility, and physical fitness in their everyday lives.

(boys and girls in grades K-5)



SCOUTS BSA

Scouting is the ultimate form of learning by doing. Youth lead their own activities and participate in service, outdoor adventures, and leadership development programs. Scouts are introduced to countless hobbies, interests, sciences, and even future career choices.

(boys and girls ages 11-17)



VENTURING

Venturing provides positive experiences through exciting and meaningful youth-run activities for pursuing special interests, growing by teaching others, and developing leadership skills.

(young women and men ages 14-20 or 13 years old and completed 8th grade)



EXPLORING

Exploring serves two different age groups, both coed. Exploring clubs serve middle schoolers, aged 10 - 14, in 6th - 8th grades. Exploring posts serve older youth 14 - 20 years old. The program model is the same for both age groups - hands-on and interactive character and career activities are facilitated by trained business leaders in your local community.

2023-2025

STRATEGIC PLAN



In 2025, a team of 8,115 adult volunteers gave leadership to programs that reached 28,135 youth across 63 counties and the City of St. Louis. This is clear evidence of Scouting's profound impact in our communities. This strategic plan outlines the essential framework to sustain and enhance that reach.

ONE VISION. ONE JUST CAUSE.

Serve all youth with relevant programs to prepare them for life.

Driven by that cause, the shared vision of the desired future includes four aspirations.



Greater relevance to today's youth



Elevated identity in the region



Strengthened long-term viability



Key partner in the ecosystem of youth-serving organizations



2025 SUCCESSSES



- Increased Arrow of Light Scout to Scouts BSA crossover rate by 14% over 2024.
- 86% of packs and troops are actively using Scoutbook, the official record-keeping and communication tool for Scouting.
- Launched the District of the Future pilot, laying groundwork for a more effective district model.
- Discovery Base at Beaumont more than tripled its reach compared to 2024, serving over 3,800 local students.
- Mobile STEM Lab (Trailer) served an additional 11 outside groups, a 55% increase over last year.
- Began a comprehensive gifts campaign to support capital, endowment, and outreach.

80%
Scouting units achieved a health rating of A or B, achieving the goal

Far exceeded the goal of
1.5 million
social media impressions

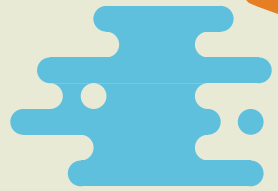
SCOUTING IS A PATH TO SUCCESS



Scouts are **TWICE** more likely to get a bachelor's degree (75.6% of Scouts alumni compared with 36.0% national average)



Scouts are **TWICE** more likely to get an advanced graduate degree (29.0% of Scouts alumni compared with 13.4% national average)



Scouts are more likely to make almost **DOUBLE** of the personal income as an adult (\$62.5k individual median income compared with \$33.7k national median)



Scouts are more likely to have very good or exceptional (750+) credit scores (55.7% of Scouts alumni compared with 39.7% national average)

Scouts are more likely to move up in their socio-economic status. Scouts that come from low-income family background are, on average, more likely to make almost twice the personal income as an adult compared to their non-scout peers with similar childhood family background.



SCOUTS ARE CHANGE AGENTS

Scouting strives to bring larger, broader, and longer social impact. The Scouting values (Character, Leadership, Citizenship, and Fitness) imprinted during childhood go a long way. Scouting alumni continue to change the world by taking more leadership roles in organizations, engaging in more entrepreneurial activities, and undertaking more civic duties.



GREATER ST. LOUIS AREA
SCOUTING

STLBSA.ORG
314-256-3000

Scouts
IN ACTION



7,069
New Scouts
Recruited



28,135
Total Scouts Served

Scouts
IN ACTION



30%
Growth in New
Youth Recruited



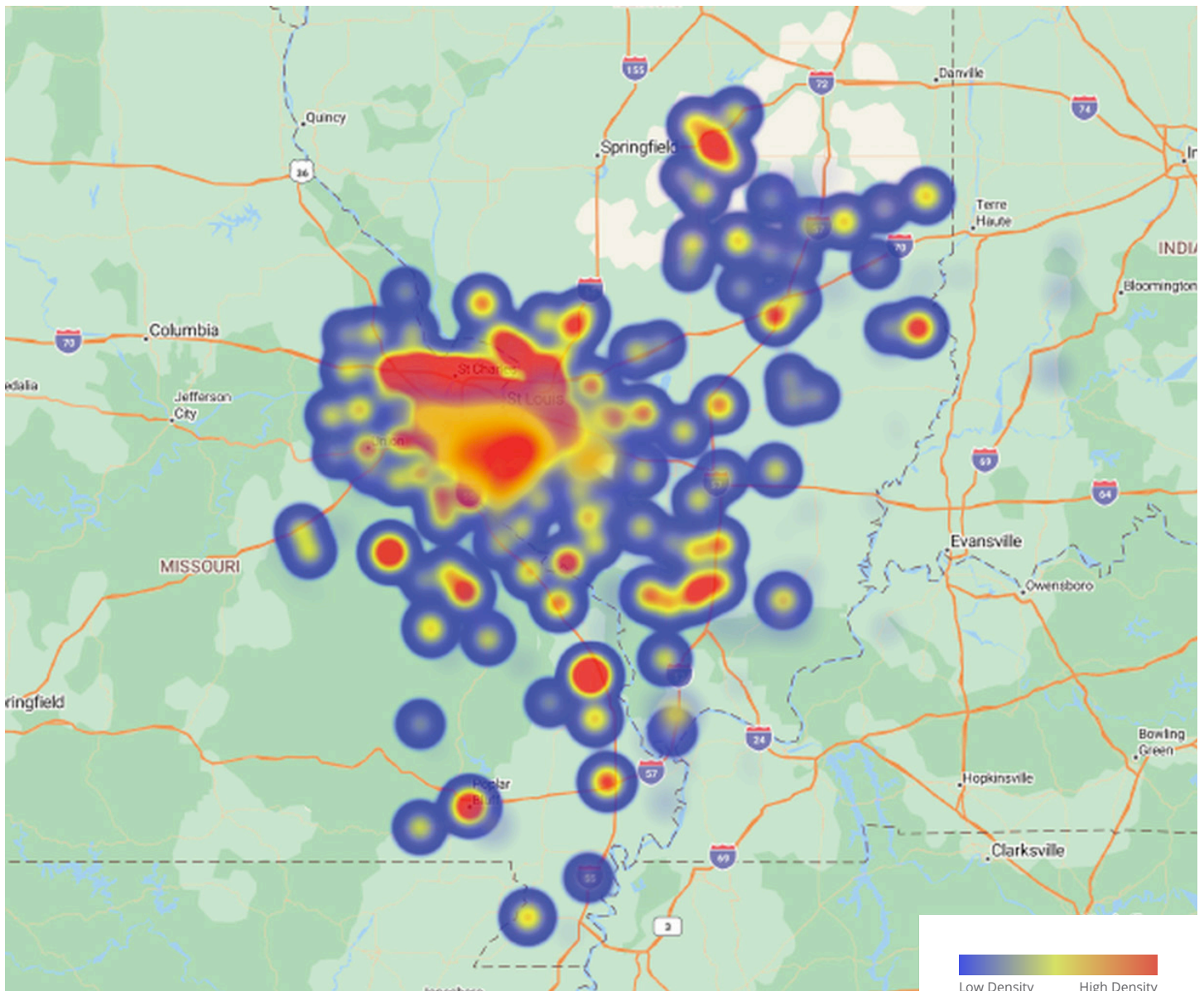
531
Chartered Partners

Membership **HEAT MAP**



This map illustrates the vibrant Scouting presence across Illinois and Missouri. It highlights areas where initiatives flourish, showcasing Scouting's robust presence.

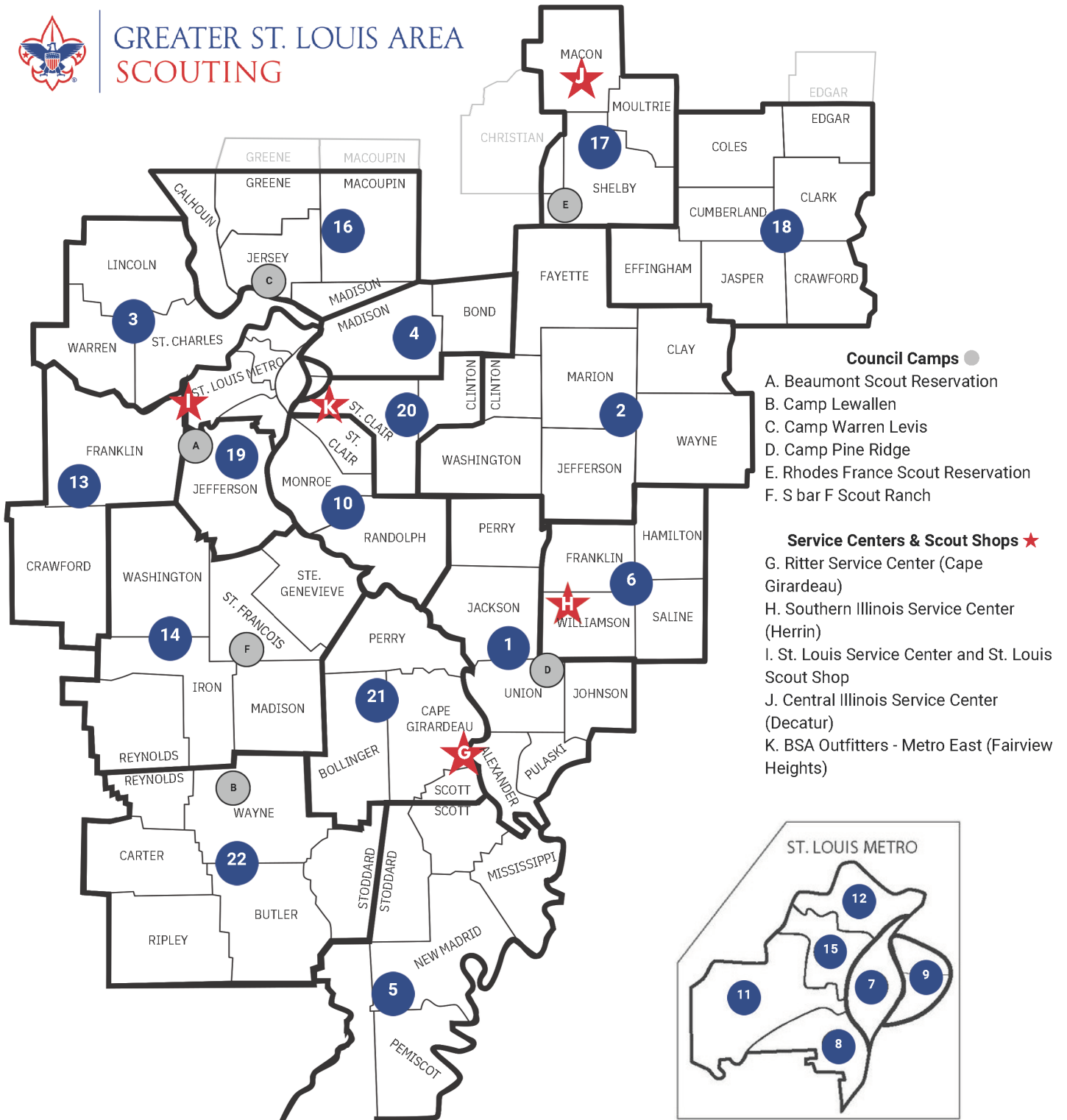
This map also identifies key growth opportunities, targeting underserved regions where new Scouting units can thrive. By focusing on these areas, we aim to extend Scouting's positive impact in the coming years.



Low Density High Density



GREATER ST. LOUIS AREA SCOUTING



- Council Camps** ●
- A. Beaumont Scout Reservation
 - B. Camp Lewallen
 - C. Camp Warren Levis
 - D. Camp Pine Ridge
 - E. Rhodes France Scout Reservation
 - F. S bar F Scout Ranch
- Service Centers & Scout Shops** ★
- G. Ritter Service Center (Cape Girardeau)
 - H. Southern Illinois Service Center (Herrin)
 - I. St. Louis Service Center and St. Louis Scout Shop
 - J. Central Illinois Service Center (Decatur)
 - K. BSA Outfitters - Metro East (Fairview Heights)

Greater St. Louis Area Scouting Districts ●

- | | | | |
|----------------------------|---------------------------|---------------------------------|----------------------------|
| 1. Big Muddy District | 7. Keystone District | 13. Osage District | 19. River Trails District |
| 2. Black Gold District | 8. Gravois Trail District | 14. Ozark Trailblazers District | 20. Gravois Trail District |
| 3. Boone Trails District | 9. Illini District | 15. Pathfinder District | 21. Shawnee District |
| 4. Cahokia Mounds District | 10. Kaskaskia District | 16. Piasa Bird District | 22. Kaskaskia District |
| 5. Cherokee District | 11. New Horizons District | 17. Arrowhead District | |
| 6. Egyptian District | 12. North Star District | 18. Redhawk District | |

Updated Apr2026

Scouts
IN ACTION



53,086

Community Service
Hours Reported



21,990

Merit Badges
Earned



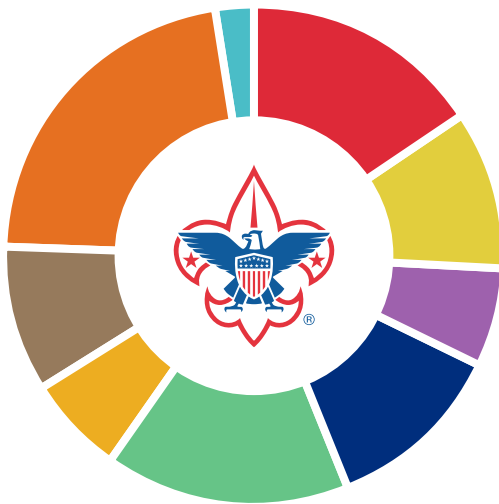
49,750

Cub Scout
Adventures Earned

Financial STATEMENT



SUPPORT & REVENUE



- ANNUAL GIVING **\$2,011,574**
- UNITED WAY **\$1,295,252**
- SPECIAL EVENTS **\$813,331**
- FOUNDATIONS, OTHER, PROJECT SALES **\$1,533,056**
- CAMPING **\$2,083,252**
- ACTIVITIES **\$764,878**
- PRODUCT SALES / SALE OF SUPPLIES **\$1,186,096**
- INVESTMENT INCOME **\$2,755,146**
- OTHER **\$274,438**

TOTAL PUBLIC SUPPORT & REVENUE \$12,717,023

EXPENSES

PROGRAM SERVICES	84.7%
MANAGEMENT AND GENERAL	4.8%
FUNDRAISING	10.5%
TOTAL EXPENSES	\$12,706,505

2025 BOARD OF DIRECTORS



Officers & Executive Committee

Karen M. Vangyia
Council President

Louis B. Eckelkamp III
Chairman of the Board

Joseph D. Sadewasser
Scout Executive

Michael B. Kennedy, Jr.

Kenneth W. Dobbins

L.B. Eckelkamp, Jr.

Jeffrey R. Hoelscher

Nevada A. Kent IV

Kevin McDaniel

David L. Steward

Jack E. Thomas

Michael J. Scully

Ronald Stephens

Harold R. Burroughs

Paul T. Combs

James D. Eckhoff

Lindsey J. Graves

Michael C. Marchal

Mark T. Fulford

John Goodwin, Jr.

William A. Gray

Danette Greer

Keith B. Guller

Duane Gulley

Mark A. Hinrichs

Brad Hodson

Christopher M. Hohn

Joseph F. Imbs III

Francella D. Jackson

Tyler W. Johns

Karen M. Jordan

Stephen R. Kappel

Paula D. Knight

C. Eric Lobser

James D. Marchbank

Richard H. McClure

Art J. McCoy II

James B. Morgan

Dean Mueller

John R. Musgrave

Stephen M. O'Loughlin

Robert E. Palmer

Steven P. Rasche

Thomas L. Ray

Brian Satterthwaite

Kurt Schroeder

James H. Simpson

Robert C. Smith

Kristin Sobolik

David L. Steward II

John L. Strube

Ross Toohey

Craig A. Unruh

Carlos Vargas

Carm C. Walgamott

David G. Wasinger

Thomas Welge

James E. Williams, Jr

William Christopher Ziebold

District Chairs

Tona Ambrose

Mark Barnes

Howard Benyon

Andrew Carruthers

Carlynda Coleman

Joel Evans

Jay D. Gatrell

Neil A. Giffhorn

Kyle Grate

Deborah Graves

Ravi S. Johar

Tamara Lackland

Julia Pusateri Lasater

Sandy Lucy

Kirk Overstreet

Mark Steele

Ken Trzaska

Keith Zoromski

Advisory Board

Charles A. Bremer

G. Kenneth Capps

Harry L. Crisp II

John E. Cunningham

Doug Fabick

Douglas E. Hill

Charles Maris

John A. Mathes

William C. Norton

Rick R. Parks

Rick L. Stevens

Douglas J. Wilks

Dennis R. Wright

Executive Board Members

Hope K. Abramov

Kelvin R. Adams

Tommye Austin

Kristie L. Bailey

Blackford F. Brauer

Winston Calvert

Keith Davidson

Joseph S. Davis

Robert J. Dierberg

Joseph R. Dively

Dirk G. Elsperman

Dwight D. Erdbruegger

Ronald G. Evens

Flint W. Fowler

Ronald A. Fromm

Mark J. Fronmuller



GREATER ST. LOUIS AREA
SCOUTING

stlbsa.org