



2022

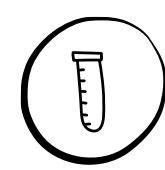
# CUB SCOUT SUMMER CAMP

VISIT [STLBSA.ORG](http://STLBSA.ORG) TO REGISTER OR SCAN THE QR CODE



**SAVE  
\$10-\$20  
PER CAMP**

when you register  
by April 13

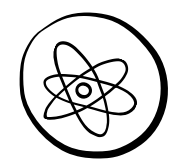
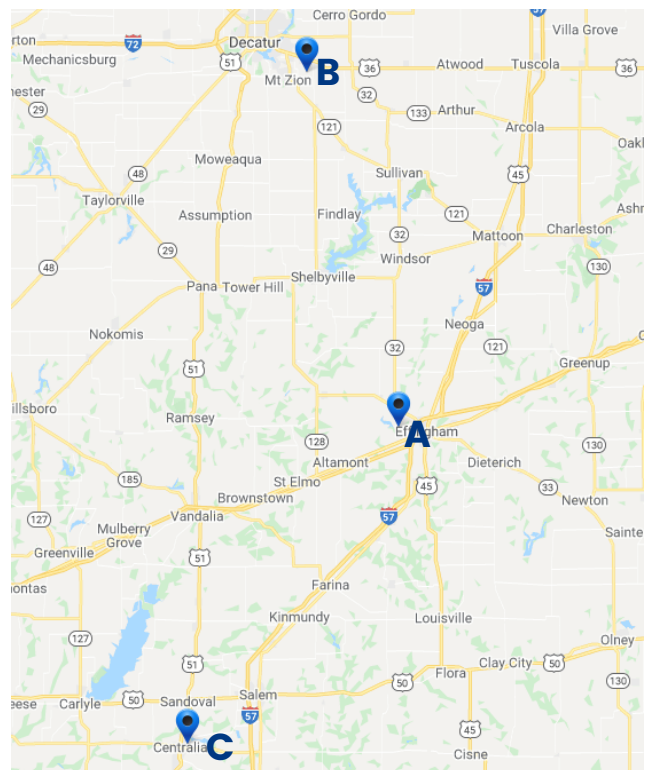


## CUB SCOUT DAY/TWILIGHT CAMPS

### LOCAL DAY/TWILIGHT CAMPS

This year's theme is Crazy Cool Chemistry! Activities include archery, STEM experiments, BB guns, hiking, swimming, games, crafts, and more.

DISTRICT:	CAMP:	DATE:	TIME:
<b>A</b> Red Hawk	Effingham Sportsman's Club Day Camp	June 24-26	9:00 AM-4:00 PM
<b>B</b> Arrowhead	Fort Daniel Conservation Area Day Camp	July 5-8	9:00 AM-4:00 PM
<b>C</b> Black Gold	Foundation Park Twilight Camp	July 25-29	5:30-8:30 PM



## CUB SCOUT OVERNIGHT CAMPS

### CUB ADVENTURE CAMPS

Half week camp for Cubs going into grades 1-5 | ~\$190 per Scout (prices vary by camp) which includes all meals, tenting (at Camp May), program supplies, and camp patch!

- CAMP MAY:** June 19-22 | July 7-10 | July 14-17
- CAMP WARREN LEVIS:** June 9-12 | June 16-19 | June 30-July 3
- PINE RIDGE:** July 17-20
- RHODES FRANCE:** July 21-24

### WEBELOS MINI WEEKS

Half week camp for Cubs going into grades 4-5 | ~\$190 per Scout (prices vary by camp) which includes all meals, program supplies, and camp patch!

- CAMP MAY:** June 23-26 | July 10-13
- PINE RIDGE:** July 21-24
- RHODES FRANCE:** July 28-31

### ARROW OF LIGHT

Full week camp for Cubs going into grades 4-5 | \$315 per Scout which includes all meals, tenting, program supplies, and camp patch!

- CAMP MAY:** June 12-17 | June 26-July 1
- S-F:** July 17-22

### FAMILY CAMP

1-night camp for all Cub Scouts, including Lions, plus parents and siblings | \$40 per person which includes all meals, program supplies, and camp patch!

- CAMP MAY:** June 18-19 | July 2-3
- CAMP WARREN LEVIS:** June 25-26
- CAMP FAMOUS EAGLE:** June 16-17